

TDM

OAKURA

NOV 2015

SPRING ON STRINGS

Chris Evans kiteboarding on a warm spring evening.



Leo Baas

Lifestyle & Rural Specialist



TSB Realty



leo.baas@tsbrealty.co.nz

021 444 073



TAKE ONE MOMENT

TOM

OAKURA

TOM OAKURA is a free monthly publication, delivered at the beginning of each month to all homes from the city limits to Okato.

THE TEAM

Co-ordinator/Features:

Kim Ferens
06 751 1519
0274 126 117
kim@thetom.co.nz

Advertising:

Kim Ferens
06 751 1519
0274 126 117
kim@thetom.co.nz

Graphics:

Ron Stratford, 751 9233
ronstratford@gmail.com

The TOM Group Ltd
22 Sutton Rd, RD4, NP

Email:

kim@thetom.co.nz

Phone: 0800 THE TOM

www.thetom.co.nz

Points of view expressed in contributed articles are not necessarily the views of The TOM


Do you have a story of local interest that you'd like to share with the readers of TOM?

Phone 0800 THE TOM
or click "contribute" at
www.thetom.co.nz

TOM dates to remember
for Dec 2015/Jan 2016 issue:

Copy & Ads - 13th Nov.

Distribution from 2nd Dec.



Dave's PC Services

Don't Suffer from PC rage!

David Skurr
Phone 06 752 1344
Mobile 0275 268 193
davespcservice@xtra.co.nz

EDITORIAL

Oakura is certainly a place to be proud of at this time of year with the Oakura Arts Trail, Fringe Garden Festival and Garden Spectacular in full swing - we have so much beauty to offer! From me to all those enthusiastic gardeners, artists, weavers, sculptors, photographers, potters, a big thank you for showcasing your talents to the wider public.



It is exciting too to be celebrating 150 years with Butlers Hotel and Oakura School, our history is something to be proud of but something we take for granted. When I was in France and visiting ancient constructions like the Pont du Gard, still standing after 2000 years albeit in a semi modified way, its longevity blows my mind. We can't imagine that sort of longevity here in Oakura but if our local hotel and school are still in existence after 150 years then something is being done right! Omata School is more than 160 years old and still going strong. Some things don't stand the test of time, either they are no longer fulfilling a need or no longer suitable and life moves on and we make way for the new. McDonald Real Estate office is an example. The site is still relevant and fit for purpose but not the old building so a new one is being built - a practical solution.

Speaking of practical - I'm not finding the new recycling system very practical. It irritates me beyond belief! I don't see why I have to do all the hard work of sorting my rubbish into different containers then remembering which container goes out on which day! Yes I buy goods in containers for which I pay a price but I don't ask for my goods to be packed in all that packaging so those making the profit should be footing the bill. I'm happy to recycle my glass but I should be rewarded for it not penalised. Presently I have a Waste Management truck coming to my road on a Wednesday, then on a Friday a glass truck and a general waste truck comes and alternating Friday's a recycling truck and a general waste truck comes - there are now three trucks a week where there was only one prior to the change - makes economic and environmental sense?? Not even close!

Kim

Pet Sitting in your own home

Pet Sitting Plus offers caring and professional in-home pet care. Our visits are customised for you and your pets' individual needs.

Services including (but not limited to):

DOGS • CATS • HORSES



Pet Sitting Plus

Visit petsittingplus.co.nz for more information or contact:

Holli Marshall

Phone: 06 752 1179 | Mobile: 027 305 7137
Email: holli@petsittingplus.co.nz

- Driveways
- Floor slabs
- Paths
- Vehicle Crossings

parkcity
CONCRETE

FREE QUOTATIONS • FRIENDLY SERVICE • QUALITY WORK

Call **027 448 4306**
Greg **06 752 1109**

parkcityconcrete@xtra.co.nz
www.parkcityconcrete.co.nz

Coastal Antennas

Digital Installs | Cable Runs
TV/DVD Tuning | Call outs

Fergus Robertson

027 746 1313

coastalantennas@gmail.com



Mayor Andrew Judd

Hi everyone

We're well into the new kerbside collection for rubbish and recycling and people are getting used to the new way of things.

This has been a big change after 22 years with the previous system, so a settling-in period for both the truck drivers and householders was to be expected.

The collection of rubbish and recycling runs until about 7pm each day, but we expect that period to shorten as the drivers become more familiar with their routes. In the meantime, if you get to late afternoon or early evening and think your bag or bin has been missed, please don't take it back onto your property until after 7pm (as the truck might still be coming).

Also, the routes the trucks take have been designed for the greatest efficiency so don't be surprised if rubbish and recycling is one side of a road is collected a few hours before the other side is done.

Here are a few more ways you can help:

Leave some space between your rubbish bag and the yellow-topped wheelie bin as the truck's grabber arm needs some space to get around the bin easily.

Don't put your rubbish bag on top of the wheelie bin (which saves drivers from having to get out of their trucks to remove the bags).

Double-check the materials that you put into the wheelie bin or blue crate. We're getting quite a few non-recyclable items in the collection – such as plastic bags, clothing, wire, toys and bubble wrap – which have to be removed for sending to the landfill.

Don't put your recyclables into plastic bags as the bags get caught on the machinery at the Material Recovery Facility. Just pop your glass item straight into the blue crate and your mixed recyclables straight into the wheelie bin.

If you're not sure if something is recyclable, please check the information pack that was delivered with your wheelie bins. You can also look at our recycling search at newplymouthnz.com/Rubbish and the app NPDC Rubbish and Recycling.



027 276 2613

0800nickip

nickip@remax.net.nz



call me anytime for your real estate requirements

Puke Ariki
MUSEUM LIBRARIES TOURIST INFORMATION



Oakura Library

If you haven't been to Puke Ariki's exhibition, *Musik-From Sound to Emotion*, it closes 15th November. I highly recommend it. It's an enjoyable outing for the whole family.

This is a busy month in Taranaki with all the garden festivals around the region as well as our own local art trail. We have all the relevant brochures.

We have a selection of gardening books ranging from *The NZ Vegetable Garden*, *The NZ Flower Garden*, *Foliage for Contemporary NZ Gardens* as well as the *NZ Gardener* and *NZ House and Garden* magazines.

Our art books range from various levels of DIY; drawing various subjects to working with textiles and various media. Or if you are looking for inspiration we have *The Painted Garden in NZ Art*, *Maori Art For Kids* and *The NZ Art Activity Book*.

Crackerjacks, pre-school story time will be held on Thursday 19th November at 10am. No bookings needed.

Our "e-books for everyone" session will be held Monday 23rd November from 4pm-5pm. Our digital librarian answers your e-books queries regardless of your device.

We hope you are finding Puke Ariki's website useful and easy to access. There are so many wonderful e-resources at your fingertips!

Our meeting room is available for free bookings.

"Be awesome! Be a book nut!" - Dr. Seuss

Happy reading,

Charlie and Vincenza

• SUBDIVISIONS • DAIRY
EFFLUENT SYSTEM DESIGN
• FARM MAPS • BRIDGE &
CULVERT INSPECTIONS



Call Ian Steele to discuss your requirements

btw company
surveyors . planners . engineers . land & g-i-s services

Cnr Courtenay and Eliot Street, New Plymouth

Phone: 06 759 5040 or 027 688 1441

ian.steele@btw.nz | www.btw.nz

National delivers on its surplus target

Four years ago, following the Canterbury earthquakes and Global Financial Crisis, the National-led Government set a target of achieving a surplus for the 2014/15 year.

The final numbers are in, confirming the Government's books are back in surplus. This is a significant milestone and one we can all take great pride in.

The \$414 million surplus in the year to 30 June 2015 is a huge turnaround on a more than \$18 billion deficit New Zealand faced in 2011.

It makes us one of the first developed countries to get its books back in a strong position following the global financial crisis.

By setting a path back to surplus and running a clear economic plan to support growth, more jobs and higher incomes, National is providing opportunities for New Zealanders and their families to get ahead.

We've worked hard to get on top of spending and to deliver better public services within tight financial constraints. We've focused on getting better results from taxpayers' money, particularly for our most vulnerable people.

National will remain focused on managing the Government's finances in a sensible and responsible manner, continuing to pay down debt, and on building a more productive and competitive economy.

Getting back to surplus is part of National's wider plan to build an economy that is far more productive, more efficient, and more globally connected than ever before.

Under National's stable, responsible management the economy is growing. It recently registered its 18th consecutive quarter of expansion to deliver annual growth of 2.4 per cent in June 2015.

We've also had 11 straight quarters of job growth, with 69,000 more jobs in the last year. The average annual

JONATHAN YOUNG MP FOR NEW PLYMOUTH

Office hours 9am - 4.30pm Mon-Fri

A: Corner Gill & Liardet Streets

P: 06 759 1363

E: newplymouthmp@parliament.govt.nz

W: www.jonathanyoung.co.nz



National
www.national.org.nz



wage is now over \$57,000 for the first time – that's \$10,000 more than when National first came into office.

We've recorded five years of positive household savings – the first time this has happened in a generation. Very low interest rates are helping households and businesses.

Our country has high labour market participation and a near-record high employment rate.

We've just successfully completed the Trans-Pacific Partnership Agreement – New Zealand's biggest ever trade deal – which is expected to benefit our economy by \$2.7 billion by 2030.

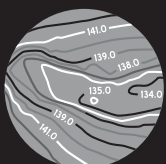
This year we've also signed a free trade deal with Korea. This means we now have free trade agreements with our top five trading partners: Australia, China, United States, Japan and Korea.

We're rolling out ultra-fast broadband across New Zealand, investing in infrastructure, and in research and development.

We're also putting more money back in your pockets through ACC levy cuts of almost \$500 million over the next two years. That's on top of the \$1.5 billion we've already reduced levies by since 2012.

The outlook continues to be for ongoing moderate growth delivering jobs and higher incomes for New Zealanders.

Providing we stick with National's plan that's working for New Zealanders, we can build on the good progress we've made over the past seven years.



GeoSync
Land Surveying & Spatial Solutions

Resource & Land Use Consents • Subdivisions
Boundary Location • Topographical Surveys
3D Laser Scanning • Building Setout • GIS

Vero House, Level Two, 10 Devon St East, NP
m: 027 676 8985 | e: info@geosync.co.nz
w: www.geosync.co.nz

Registered Professional Surveyor MNZIS, Assoc NZPI

New Homes / Kit Homes / Renovations
Alterations / Property Maintenance
Decks / Retaining walls / Fences

Call Chris now for all your building requirements

m: **027 462 8660**
h: **752 7251**

 **d homes**



Kaitake Community Board

I guess everyone has their fingers crossed that some summer weather will kick in soon. The cold winds and squalls have hindered an early start to vege garden planting and made beach walks a bit of a trial at times. The KCB has been particularly busy during the past few months and I guess that will be the pattern up until Christmas.

Here's something all village residents should be aware of. There is going to be increased road traffic on Surrey Hill Road, Upper Wairau Road and through the village over summer. About the time you are reading this contractors will start logging a joint venture forestry block located right at the top of Surrey Hill Road. This will continue during weekdays until the end of February. Logging trucks will be transporting their loads to the port and returning unladen for more. There will be a varying number of trucks on this road on any given weekday, travelling between 7am and 5pm. No logging operation will occur during weekends and public holidays.

As our community grows we see a consistent increase in the proportion of residents regularly involved in sport. Every sport has unique characteristics that appeal to one's interests, abilities, and expectations. We also know that there is a complex mixture of social and economic factors influencing patterns of behaviour and sport participation choices. The decision to participate in one sport or activity over another, or to participate at all, is usually the result of many interacting factors. Sport is good for community health and well being. The KCB has worked closely with the NPDC, sporting organisations and clubs, voluntary groups and others to support the broadest possible sporting offer to the community and across all age groups. We notice that our only public sports field - Corbett Park, is heavily used and catering for a wide range of sporting activities. To that end we are exploring the possibility of setting up a management group of all the local sporting stakeholders using the park to ensure all can be involved in its stewardship and maximise its potential for all users. It is not a new idea at all but we consider it timely, what do you think?

Don't forget that the KCB runs a popular Facebook page so all you FB social networking fiends out there can access the latest and the greatest about the KCB and its activities. Good luck as well to all those students sitting NCEA and Scholarship exams during the next month – our community wishes you well.

Well that's it for this issue. Roll on summer!

The next meeting of the Kaitake Community Board will be held in the Supper Room of the Oakura Hall on Monday 9 November at 4.30pm.

Ka kite ano

Doug Hislop (752 7324) on behalf of Keith Plummer, Mike Pillette, Paul Coxhead and Councillor Richard Jordan who is the Council representative on the KCB.

Our Eroding Coastline

As erosion issues in North Taranaki have featured a great deal in the press during the past weeks I thought it would be timely to provide some information for all the many beach users who read TOM. It is an accepted fact that those of us who regularly frequent our coastline (surfers, fisher folk, horse people, dog walkers, etc.) check out the sea and beaches most days to help plan their daily intentions - what are the waves going to be like or can I launch my boat or is the tide right? Regular users can't help but have noticed the intensified meandering of river and stream mouths from the Stony River through to Back Beach during the past year. Many locals I have spoken to say they have never seen the Oakura beachfront in this exaggerated state before, yet it is an entirely normal occurrence. This completely natural cycle has been going on for thousands of years. The erosion and subsequent replenishment cycles can be slow – 25 to 50 year cycles are common.

But how does it happen? To understand that one needs to have some knowledge of the geomorphology of our coastline. Here is a simplified explanation. Taranaki protrudes into the Tasman Sea, which along with the Southern Ocean generates regular high-energy wave systems that continually batter the coastline. Consequently most of the shoreline consists of a sand-starved narrow boulder beach platform carved by wave action from the intensive lahar flows from nearby Mt Taranaki. However small areas of sandy foreshore do exist, nestled next to headlands aligned in a unique way, or in other small coastal indentations.

The major reason for this is the littoral drift system on the coast, much stronger north of the Cape and moving northwards, with a more feeble system travelling south below the Cape. This continual process is responsible for the longshore transport of sand. Most of the sediment (gravel, small stones, scoria etc) that breaks down and becomes sand continually flows from the streams and rivers coming off the mountain, with the Stony River near Okato being the major contributor. As this longshore sediment creeps northwards through wave, wind and tidal action it replenishes and nourishes the small sandy beaches that have historically survived down through the centuries due to their position. This littoral system cannot be understated, as unique mineral sands identified as coming from Mt Taranaki have been found on Pandora Bank – the continual wave action tourists see at Cape Reinga, universally (and incorrectly) described as the place the Tasman Sea and the Pacific Ocean meet.

Foreshore erosion is usually attributed to the depletion of sand on a beach, allowing tidal movements and wave action to eat away at the adjoining land. Under these circumstances it is ironic that current coastal erosion issues on our Kaitake beaches are being caused by too much sand rather than not enough. The large erosion events on Mt Taranaki over the past few years are the cause of the existing situation. Between 1998 and 2007 an estimated 14.3 million cubic metres of terrain collapsed on the mountain, with the Stony River experiencing severe disintegration in its headwaters. Since the initial collapse in 1998, the

adjacent coastal shoreline has experienced a continuous influx of dense volcanic sands from the Stony River. These sediments are being transported to the east and north by the energetic wave climate, and continue a relentless trek toward New Plymouth.

When a slug of sand reaches another river or stream mouth, unless there is sufficient water flow, it carries the river or stream mouth eastward, creating a mini Farewell Spit like protrusion and pushing the stream bed adjacent to the land. The stream then begins eating into the foredunes and foreshore. However this is not the case on the coastline stretching north from Waitara. This is a soft papa sediment area with high vertical coastal cliffs far more prone to erosion with fewer places for the sand to settle. So, that's the background information and now back to Oakura Beach.



The Katakana Stream at Fort St George being pushed eastwards, causing erosion along the foreshore.

We have a sandy beach here due to the protruding Timaru Headland and Ahu Ahu Reef. These two parts of the local coastal landscape provide the shelter for sand to accumulate and remain on our beach. Historically there has been a foredune area from the western base of Ahu Ahu Beach through to the rocky outcrop at the eastern end of Oakura Beach – locally known as Jefferies Bay, directly down in front of Pitcairn Street.

Over the centuries sand accumulated and sand hills formed between the high tide mark and the escarpment or cliff backing this area. Sand, having similar properties to liquid, moves so as storms have come and gone the sand in the foredune area has 'sloshed' in and out accordingly. The southern storms though have a far smaller effect on erosion of the Oakura dunes because of the reef and headland protection. However storms in the north generate wave action on the opposite angle and can cause more extensive erosion. Therefore the La Nina weather pattern has a greater effect due to the type of weather it generates. As already stated this has been going on for thousands of years.

The major change in the public mind has been caused by the continuing urbanisation of coastal beach areas. Generally the public has shown little interest in coastal erosion. Even at beaches where there were holiday baches folk tended to frequent them for only small annual periods.

Now of course expensive homes, lived in all year round, are invariably found on beach areas referred to in the NPDC District Plan as the coastal hazard zone. Many of these homes have been built on foredune areas. In Oakura there are buildings on the foredune area stretching from the furthest beachcamp cabin, past the NPOB clubhouse, through to the east of the Wairau Stream to the rocky outcrop at Jefferies Bay. It's a rather perilous thing to do but understandable when you remember the length the erosion cycle can take. For example if the cycle for the past 15 years has been in a replenishment phase then most people wouldn't consider erosion as a major factor before building. When the cycle does change then many people perceive the threat to their property on the foredune as something unique rather than nature's normal and natural cycle of the seaward boundary of the foredunes receding

during high storm periods before advancing and (in the end) accumulating again when replenished by the littoral drift system. Storms do not destroy beaches. They do change their shape and location, moving sand around to maximise the absorption of wave energy and then recover in the days, months and years to follow.

There are two other important issues connected with erosion events on the Oakura beachfront. In the late '60's the local council (Taranaki County Council) decided it would be a good idea to establish a road from Tasman Parade from the beach store to Ahu Ahu Road. Local residents managed to get that stopped but not before the project had started and truckloads of fill had already been dumped on the dunes in front of the campground and a road started. The current road and campground frontage therefore is sited on unstable fill and this reclamation is particularly prone to erosion.

In the '80's the residents on the foredune area from Wairau Stream through to Jefferies Bay constructed a hard surface rock riprap wall to stem the erosion risk on their valuable properties. There is plenty of evidence world-wide demonstrating that while such rock walls may help protect properties they do cause considerable problems in the beach sand replenishment cycle as the wave action reflects off the rocks and carries more sand than normal back out to sea. There have been instances of all the sand in front of these properties being completely stripped away through a single storm event.

As the North Taranaki coast becomes more popular as a residential lifestyle choice it is therefore timely that NPDC is planning to embark on a district-wide coastal erosion project, which will incorporate the development of a district coastal erosion management policy, a review of its current Coastal Erosion Strategy, a review of the Natural Hazards section of the District Plan. There are a raft of policies that influence the way Council deals with, plans for and manages coastal erosion. With the predicted sea level rise over the next century it is inevitable that coastal erosion will accelerate but it is wise to remember the only solution in the end will be for residents to retreat from the foreshore as no council in the country can afford to protect its entire coastline.

by Doug Hislop

Health & Wellbeing

MINUS SPECIALISTS

Ladies!

EMBARRASSED BY UNWANTED FACIAL HAIR?

Electrolysis is a permanent method of hair removal

Call for your free consultation

Tracey Lusk dip.CIDESCO
752 7875
or TXT 027 636 8060

Mindfulness Classes

Mindfulness is the new buzz word for meditation. An attention to mindfulness has been shown in many scientific studies to reduce stress and stress related illness (digestion problems, heart problems, fatigue, anxiety, depression, physical symptoms such as back problems and migraines). Apart from the physical, regular mindfulness practices bring about peace, joy, balance, an even approach to life's challenges and even spiritual connection.

In this 4 week programme we will learn different ways of creating a mindfulness practice

Starting Tuesday 10th Nov - 7pm til 8.30pm
St James Church Hall, Oakura

Investment \$60

Call Kate Evans to book your space: 027 203 7215

Mindfulness Classes

Due the huge amount of interest in the mindfulness course I am currently running, I have decided to run another class. This time the class will be on Tuesday nights for four weeks. The current group are getting a huge amount from it and I know you will too. So please give me a call to book your space, won't it be wonderful to have stress relieving tools leading up to Christmas - what a present to yourself.

Kate Evans

ohb

OAKURA HAIR BOUTIQUE
BEAUTIFUL HAIR

Main Road Oakura



BOOK ONLINE THROUGH OUR FACEBOOK PAGE

www.facebook.com/Oakurahairboutique

M: 027 276 5185 PH: 06 752 7300 E: ohbsalons@gmail.com

OKATO POOL

Open weekends, public and school holidays, 12.30pm - 6.00pm
Lane swimming, Mon-Fri from 6.00am - 9.00am

Admission Charges

Adults	\$3.00
Children	\$2.00
Spectators	\$1.00
Adult with child under 8 yrs	\$2.00

OPENS 7th NOVEMBER

For 'What's on' and other information, please call 759 6060 for further details



NEW PLYMOUTH DISTRICT COUNCIL
newplymouthnz.com

INTEGRATIVE MEDICINE -

Working with patients for optimal health.

The aim of the practice is to work in partnership with patients, offering a comprehensive and holistic approach to health and well being.

High quality and effective diagnostic and treatment options combine the strengths and safety of modern medicine with natural therapies (herbal, nutritional, lifestyle and environmental) for which there is some high-quality scientific evidence of safety and effectiveness.

Dr Susan Oldfield

INTEGRATIVE PRACTITIONER

MBBS Dip O&G DFFP MRCGP FRNZCGP MACNEM

By Appointment Only

027 310 1444 | drsusanoldfield@gmail.com | www.drso.co.nz

IED Lifting Centre New Year's Day Carnival

Another year has passed and planning is already underway again for the popular New Year's Day carnival traditionally held at Oakura Beach arranged by the Oakura Beach Carnival Trust (OBCT).

This is the second year that the IED Lifting Centre and Cunningham Constructions supports the carnival!

The OBCT is focused on providing an event that brings the local and wider Taranaki community together. The New Year's Day will be an action packed day with old favourites and new exciting events.

So far we can say the giant water slide, plenty of live music with the very popular band Blistered Fingers and delicious international food stalls will be there. Don't miss the possibility to win fantastic prizes kindly sponsored by members from our community!

Admission is free again although a gold coin donation is much appreciated. The donation will support community groups who will make our district a better place to live.

Of course this day is only to happen with the support of volunteers and sponsors from our community. If you would like to help out on that day, please let the OBCT know: nydcarnival@gmail.com

Follow us on Facebook: facebook.com/oakurabeachcarnival



From Last New
Year's Day Carnival.

**BOON
GOLDSMITH
BHASKAR
BREBNER**
teamarchitects

WHERE IS YOUR HAPPY SPACE?

"On our village development site. It's really satisfying to see the project progress. BGGB's expertise and professionalism has been invaluable."

— JILL DINGLE - CEO Taranaki Masonic Trust



Celebrations at Butlers

It's party time at Butlers Reef Hotel as the community celebrates 150 years of history at our local pub.

The team at Butlers have put together a fun afternoon of celebrations to mark this auspicious occasion. In typical Butler's style there will be entertainment for all ages including a bouncy castle for the kids, neighbourhood games including tug-o-war with the fire brigade, a bbq, an opportunity for all budding musicians to get up and play with a band and a time capsule ceremony.

The time capsule will be lowered into the 'old well' at some stage and inside will be memorabilia about the hotel, some supplied by locals.

Tanya Farrant, the general manager of Butlers but more obviously the friendly face most of us associate with Butler's, wants the whole community to get involved by popping in during the afternoon, maybe telling a few stories about Butler's and having a bit of fun on the day - Butler's has always been about family and fun. Many regulars tell of practically cutting their teeth at Butler's.

Butler's Reef Hotel began as The Oakura Hotel in the late 1850's or early 1860's and with most public houses, was an establishment with accommodation for those travelling by horse or foot. Past owners of the hotel include Tom MacDonnell, Jack Butler who obviously renamed the hotel 'Butlers Reef Hotel'. Dominion Breweries bought the hotel



in 1979 and Evan and May Mita took on the lease. Evan junior and Kay Mita followed then the Knudsen's and currently the Crowded House Trust run the lease.

Butler's Reef Hotel is now nationally recognised as a premier summer band venue and for locals it is the place to play pool, sing karaoke, meet up with mates, attend concerts, attend parties, quiz nights and community events - it is Oakura!

See you on Sunday 8 November from 2pm.

Next month watch out for some interesting tales from Butlers as told by some of the locals who have been going to Butler's for more than 60 years.

by Kim Ferens




BUTLERS REEF INVITES YOU TO CELEBRATE 150 YEARS!

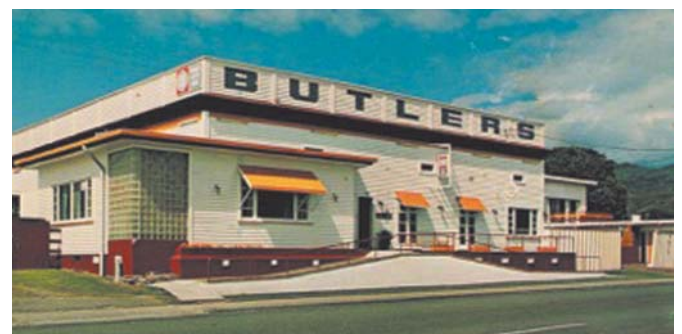



SUNDAY 8 NOVEMBER 2 - 7PM

MUSIC BBQ DINNER KIDS ACTIVITIES TUG OF WAR TIME CAPSULE

**MEET YOUR NEIGHBOURS, BRING THE FAMILY
LET'S CELEBRATE OUR COMMUNITY!**

**FOR MORE INFORMATION CONTACT TANYA
75 27 765 OR 027 3111 534**



SPORTS



Kaitake Golf Club News

October has been a busy month on the golf course. All the Club Championships have been played and the winners were -

Senior Men: D. Simpson with M. Brown runner-up.

Intermediate Men: R. Cloke with W. O'Donnell runner-up.

Junior Men: S. Skene with C. Sole runner-up.

Limited Men: M. Neild with D. Keegan runner-up.

Weekend Women Bronze 1: D Jones with J. Farrant runner-up.

Bronze 2: M Pettigrew with P Gray runner-up.

Mid-week Women Bronze 1: S Burgess with T McEldowney runner up.

Bronze 2: K Vernon with A Murdoch runner up.

For the first time there was a 'play-off' between the Mid-week and Weekend Women to determine who will represent Kaitake at the Taranaki Champion of Champions and Rosebowl this year.

Silver Division winner was S Richardson (WE) with R Robins (MW) runner-up.

Bronze 1 winner was S Burgess (MW) with D Jones (WE) runner up.

Bronze 2 winner was K Vernon (MW) with M Pettigrew (WE) runner up.

Congratulations to all the winners and all who participated. The Kaitake team defended the 2014 Taranaki Top Team title in atrocious weather that only the hardy ventured out in. This year they came second to Manaia by 2 points. Well done team, you did us proud.

Coming up soon - Kaitake Club Christmas Hamper on November 7th with the BTW Open Christmas Hamper to be played on 22nd November

MID WEEK 18 HOLE WOMEN

Winners of this years' Top Dog were N Mancer and S Aspinall with D Johnson and J Gerrard runners up.

The Cleaver Challenge is played in a team of three, each contributing the best Nett score. Winners by 1 point were J Koch, J Greenlees and M Barrett. Runners-up - N Mancer, B Adamson and J Seamark.

MID WEEK 9 HOLE NEWS

Club Champ finals have now been completed with the 1st Section's Pat Wilcox taking the victory over Heather O'Sullivan and 2nd Section winner Jenny Clarke over Susan Cottam. A celebration morning tea followed at The Carriage in Oakura Village. Pat will be hoping to continue her winning form when heading to Stratford to contest the annual Taranaki 9 Hole Champion of Champions later

this month. Good Luck Pat and good luck to the rest of the Kaitake girls playing in the 9 Hole Open.

The Super 9 series has finished with round 6 accolades going to 1st Section Jo Wilson-West and 2nd Section Chrissy Warden. Both players carded low nett scores.

Thursday victories go to Thelma White for Stableford, Team W (Jo Wilson-West and Pat Wilcox) for combined nett.

Monday 5th October saw the 9 Hole ladies host their Open Day - although entries on the low side, nothing else matters when there is good company, good food, good prizes and of course good golf.

Home advantage saw Kaitake in the top three spots of the 1st Section - Christine Alexander, Jean Keegan and Jo Wilson-West. 2nd Section to Urenui's Anthea Davidson, and Fitzroy players Patty Jones and Lynette Kilmartin. Closest to the pin on the 4th - Christine A.

Lots to be grateful for this month - Long may it continue

TWILIGHT GOLF

Wondering how to spend the extra hours of summer? Come and join us at Kaitake. Twilight golf will start on Tuesday the 10th November with the usual format. Barbecue and bar facilities available Golfers and Non-golfers welcome. Tee off between 3.00 – 6.00pm.

SUMMER MEMBERSHIP

A special \$200 Summer Membership will be available again from 1st November till the 28th February. This allows you to play as many games as you like over that period. This is an opportunity for new golfers or casual golfers to get into their golf. A deal can be done if you wish to continue on and join as a full member. Talk to Jacqui in the office.

GREEN FEE GOLFERS

Casual green fee golfers are always welcome at Kaitake. We are about to introduce a 'loyalty' card so next time you pay your green fees ask for details at the office.

CHIPPERS (5 – 12 year olds)

Our keen 'Chippers' are still getting together ever second Sunday for coaching and a few holes of golf. Hopefully the weather will warm up now and more will join in. Phone the office for the next Chippers day.

Andrea Jarrold, President

(06) 752 4494 • 027 524 4004
flexiblelectrical@gmail.com



GRID CONNECTED SOLAR POWER SYSTEM SPECIALISTS

Oakura Bowling Club

CLUB CHAMPIONSHIPS

Allan Bridgeman, Chris Lane and Mike Vickers won the club championship triples final in a high quality game over an Adam Collins skipped team of Bruce Jackson and Andy Shearer. Blustery and difficult playing conditions did not stop the Bridgeman led trio establishing an early 13 nil lead which laid the platform to hold off a fast finishing Collins team for a close fought 23 – 17 victory.

The highly prized and coveted fours competition is the next club championship event on the program. Based on past years experiences this competition will be a fiercely contested affair.

The club singles (senior & junior) championship will also be played on Sunday afternoons throughout November. All members of the community are welcome to come on down and enjoy the hospitality of the club while watching high quality bowls throughout the singles competition.

INTERCLUB TOURNAMENTS

The midweek tournaments of Avery and Gilmour are well under way with the Oakura Bowling Club having a very healthy 75% and 50% win percentage respectively. Allan Bridgeman, Brian Wickham, Peter Murdoch and Rex Phillips all have a blemish free card with 3 out 3 wins.

A solid start to the Saturday Shield completion has the Oakura Bowling Club placed 4th after 2 rounds. Well done to first year bowler Kurt Smith and experienced skip Colin

Roberts who both have two wins from their two games.

CLUB NEWS

Congratulations to Adam Collins and Steve Muller for selection in the Taranaki Junior (under 5 years) team that recently contested the hexagonal central region academy tournament at Wanganui. Taranaki finished a very credible 3rd finishing 2 points (1 win) behind both Kapiti and Wellington.

BOWLER OF THE MONTH

This month's award goes to Mike Vickers who after 35 years has won his 2nd Club Championship. In 1980 he was a member of the successful club championship triples team skipped by Neil Maskelyne. We are all wondering if Mike is still using the same bowls!

The Underarm Bowler

EVERY DAY IS A GREAT DAY AT THE BOWLS CLUB



OAKURA
Bowling Club
& Social Club

Special Offer for first year bowlers

- Free set of pre-loved bowls
- Coaching sessions
- Oakura Bowling Club polo shirt
- Half priced first year membership

Contact Steve Muller (match convenor) – 06 757 4399

KAYAK FISHING CLUB

At long last we are starting to get some better days weather wise and the fishing is good when we can get out to catch them.

The first club day of the season was a success with a good turnout for the \$6.00 day (all anglers must use a \$6.00 warehouse kids' rod and reel.)



Garry and Andy Rae with the biggest fish from the \$6.00 day (Barracuda).

Oakura won the the Ali Krutz Memorial trophy on the 18th October for the 3rd year in a row with a 3 kg snapper. The weather was not good with strong winds and rough sea, only two fish caught and ours was the winner.

Plans are well underway for next years Kayak Classic and we have announced the early bird prize which is a Heli Tranz helicopter fishing trip to Great Barrier Island. Along with a Viking reload kayak for the main all ticket draw, and a Viking GT for the junior angler prize draw, next year's 10th event should be our best and biggest yet.

Garry

Quality
NZ art,
craft and
jewellery



The Crafty Fox
OPEN 7 DAYS 9am - 5pm Ph 06 752 7291

Oakura Pony Club

We've already had our first three rallies to kick off the new Pony Club season. With two of our young equestrians having represented North Taranaki at the Pony Club Show Hunter Champs and another of our local superstars on the podium at Equidays at Mystery Creek, our local club is off to a flying start.

We are fortunate to have a great facility situated so conveniently in the village and really welcome the interest of locals who may want to wander along and watch our riders in action, either at our evening rallies or when they are using the arena for training. These are hard working, talented kids who delight in sharing their love for their horses and the sport with others.

As the evenings lengthen we will see more riders out on the roads, either on their way to the beach or the club, and they really do appreciate the patience of other road users. For those who are unsure, the ideal way to safely pass a horse and rider on the road, coming from either direction, is to slow right down, as you do when passing a school bus, and wait until you can safely give as wide a berth as possible as you slowly pass.

Just like small children on bicycles, horses can be unpredictable so for the safety of the motorist, the rider and the horse, a little patience is necessary. You'll be rewarded with a smile and a wave from an appreciative equestrian.

Our next rally will be Tuesday November 3rd, come along and see what these kids are up to. You can also follow us on Facebook for rally dates and news.



At our recent camp: ponies like to hang out together in the sunshine too.

Oakura Grows Equestrian Talent

Oakura is an amazing place; we all know and appreciate that. But, did you know that Oakura has an incredible number of very skilled equestrians? The varied terrain, the beach and the work ethic of the people who live here has produced and is still producing some unbelievably talented horses and riders.

Just to name a few, down the road in Okato, Matthew Grayling has represented New Zealand in 3 Day Eventing in the Athens Olympics. His girls are following in his footsteps and have had some big wins nationally.

Heelan Tompkins who grew up in Oakura at her mum's riding school, was reserve for the Sydney Olympics. Heelan was elevated to the New Zealand team for Athens four years later with great success. On her grand old campaigner Glengarrick, who at 18 was the oldest horse at the Athens Olympics. Heelan finished top placed of the Kiwis in seventh. Heelan has been near the top of the eventing rankings in New Zealand for some time and showed her quality by again being the best of the Kiwi team at the World Equestrian Games in 2006 to finish in seventh place.

Vanessa Way is training and riding dressage champions (and their riders). She just missed out on competing in the London Olympics on KH Arvan. KH Arvan is now being ridden by Way's student and Oakura Pony Club member Molly Lumb. Molly (17) and Arvan have had an amazing season receiving the biggest accolade given to a dressage junior rider - winning the New Zealand Young Rider of the Year in 2015.

Catherine West also competes at the top (dressage Level 5 and advanced) and is always consistently at the top of her sport even though she has a full time schedule at Massey University.

Jordan Giltrap on Celtic Limelight was the Dressage Pony of the Year winner and competes across the disciplines in Show Jumping, representing Taranaki in the Saba Sam Team at Horse of the Year show.

Our show jumping riders are well represented on a national and international stage by the Dickey family. Matthew Dickey, as a junior rider, had numerous wins at the highest level of Pony Grand Prix Jumping and Show Hunter. Now training his own young horses, he has had much success. Winning the 5 Year Old Series Finals in 2013, along with many wins and Championships. Mat has traveled to Queensland, Australia, in a Show Jumping New Zealand vs Australia competition, twice as the captain. Tanya Dickey has had numerous wins as well and is often seen riding her lovely horses through Oakura.

Also a Show Jumper, Lydia Quay, who now runs Clearwater Riding School, had a great year on her mount, Kaipara Double Dee, moving up to World Cup competition last year.



Rachel Hooper

✓ Positive ✓ Stress Free ✓ Rewarding

Considering selling?
Interested to know what your property is worth?

Call me on **M** 027 235 5284 | **DDI** 06 222 3424
or **E** rachel.hooper@eieio.co.nz
for a FREE and confidential market appraisal

and receive a \$20 voucher from

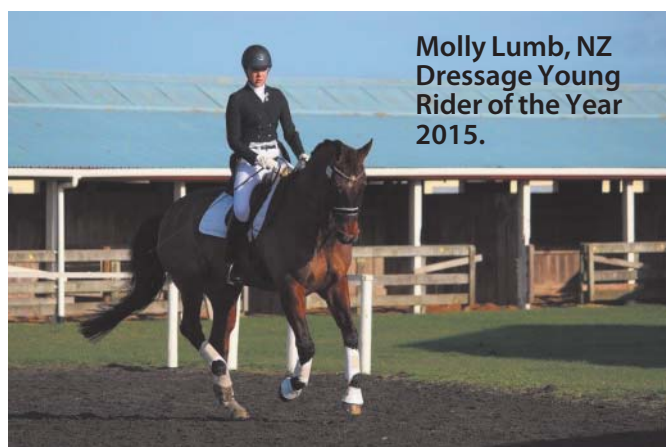


Vanessa Nagle, won top honours in Show Hunter at the Horse of the Year show on her mount Mr Jones. Vanessa also proudly took home the Taranaki Equestrian Show Hunter Rider of the Year trophy for the 2014/2015 season. The Oakura Pony Club coaches Denise Paterson and Robyn King, give coaching sessions to children and their ponies and introduce them to the varied disciplines on offer. Dressage, Jumping, Show Hunter, Mounted Games . . . They also teach kids how to feed and care for their ponies. Other talented trainers and coaches call Oakura their home. Dave Stewart has started many young horses and taught lots of naughty horses to load into their floats or trucks. I, Holli Marshall, teach riders once they get their own ponies or horses, and I specialise in Hunters and Jumpers. So the next time you see a horse or pony going up the road, they may be an Olympian or an Olympian in training. Slow down, give them a wave. I bet they'd give you some horse poo for your garden, if you asked.

by Holli Marshall



Abbie Deken, Molly Lumb and Vanessa Way - 2015 champions.



Molly Lumb, NZ Dressage Young Rider of the Year 2015.



Mat Dickey.



Maddie Hardie-Boys on Winnie.



Tanya Dickey at the Taranaki Equitation Finals.



Lydia Quay on Kaipara Double Dee.



Vanessa Way on Mr Jones.

GETTING WET



Oakura Boardriders

The incessant onshore winds are starting to wear everyone down but the club champs were finally run Labour weekend, we will have the low down next issue of TOM. Our Friday night social evenings have kicked off again so come on down and have a natter. Surf coaching will be starting early November so things will start to get really busy. Oakura Boardriders is hosting the Interclub contest this year on Nov 14-15th, hopefully we get some good conditions and take the trophy off the New Plymouth Surfriders Club. This is always a good day so come and show your support. The weather has been changeable but it is finally warming up. The wind is tiresome though so a lot of members seem to have been away on tropical excursions trying to wash away the winter blues and by all accounts with Indonesia being the main destination it has had some great surf and weather giving those travellers something to smile about. The new skate park is targeted for completion by March and things are slowly progressing through the planning stages. Hopefully this will be a great facility for the village for some years to come. The club renovations are still to be completed once a certain builder returns from his holiday! Early October saw the 2015 Scholastics Surfing Championships held, both the secondary schools and the primary schools contests were held in Gisborne. Oakura local, Tom Butland placed 2nd in the primary school champs, and the Taranaki team placed third at the Secondary Schools Champs. Taranaki Surfers continuing a strong tradition of doing well with Isaac Kettle 4th U18 Boys, Daniel Farr 1st U16 boys, Joel Clegg 4th U16 boys, and Zhana Hutchison 1st U16 girls. Another success to be noted and applauded was the NP Boys High School Surfing team being named team of the year at the NPBHS awards night. This is a huge achievement for surfing in a school that has a strong sports culture dominated by the

Tom Butland in Gisborne.



Isaac Kettle and Kane Rowson - NPBHS Sports team of the year.

big mainstream sports. Huge congratulations to the team but also the teachers, Kane Rowson and Titch Turner who with some talented surfers have helped change stereotypes and devoted their time to building a culture to be proud of. The Surfing traditions at NPBHS are as strong as ever and for those boys wanting to further their surfing, skiing and snowboarding NPBHS has some great options.

Brent Anderson, Oakura Boardriders.

President: Luke Florence; 06 7527889.

Secretary: Paul Lobb ; 06 75 27556.



NPOB Swimming & Surf Club

OPEN DAY / REGISTRATION

3pm, Saturday, 15 November 2015

Kaitake Rugby Club, Corbett Park

Join up and learn new skills while having fun at the beach. All new and existing members are welcome – young and old, competitive and non-competitive, social and serious.

This year there is an option to join the club as a social member, cost \$20. The membership allows you usage of club facilities ie bar and changing rooms, covers members volunteering for patrol but who do not use the club equipment and entitles you to SLSNZ courses.

It's about developing tomorrow's lifeguards, making friends, being active and enjoying the beach in a safe environment.

CONTACTS: Nicky Spicer 0274718101 chair@npobsurfclub.co.nz

Nova Robinson 0275218200 juniorsurf@npobsurfclub.co.nz

Join us on Facebook: *NPOB Surf Club*
www.npobsurfclub.co.nz



LIST AND SELL WITH ANJIE & DONNA AND RECEIVE A \$1000 TRAVEL VOUCHER

*conditions apply

HOUSE OF TRAVEL

What Is Your Home's Value
In Today's Market?

Call your local agents for
your *FREE* appraisal

to find out.

 **ANJIE & DONNA**

anjie&donna@eieio.co.nz



Anjie Cook

(M) 027 555 4736

(O) 06 757 3083



Donna Black

(M) 027 549 6123

(O) 06 757 3083



Oakura Arts Trail

Once again this year the artists of the Oakura Arts Trail will open their studios to the public. This very popular arts trail coincides with the Taranaki Garden Festival and will be held on the two weekends of the 31st October and the 1st November and the 7th and 8th of November.

The artists involved are Kris White, Richard Landers, Deborah Hoare, Linda McFetridge, Margaret Scott, Amanda Crehan, Rosie Moyes, Ringcraft Moana, Deborah French, Susan Imhasley, Brenda Cash, and the Korver Molloy Gallery. Some of these artists have international and national recognition. There is an addition to the trail this year, as a place of interest, a collection of works by Michael Smithers. These can be viewed at his daughter's home on Ahu Ahu Road. The other place of interest is the Crafty Fox Gift Gallery in the old church in the centre of Oakura Village.

Many of the artists who are in the Trail were part of the

recent arts programme at Oakura School where they spent two full days teaching students. The work that was produced by the students was wonderful and Oakura is fortunate to have artists who donate their time in this way. There will be workshops running during the arts trail for all ages and other artists will be happy to demonstrate their techniques. The experience of visiting artists in their own work environment is unique and often leaves a lasting impression on people, who return to buy work or bring other visitors to see the art.

There will be an exhibition of all the artists involved in the Arts Trail at the Korver Molloy Gallery which is situated in the old Okato Cheese Factory at Tataraimaka on Highway 45.

Brochures for the Trail can be found at all studios, the information centre and on the notice board next to the chemist. Look out for the large yellow and blue flags which will help to guide you to the artist's studios. For details on the artists and the location of their studios go to www.oakuraartstrail or join us on Facebook.



Brenda Cash in her studio.



Oakura
arts trail

31. Oct & 1. Nov
7. Nov & 8. Nov

10am - 4pm

An Opportunity to visit
Oakura's artists in their
studios.

www.oakuraarts.co.nz



Leo the Lifestyle Specialist

Leo Baas is a Dutch Kiwi (does that make him a Diwi??!!) having lived in New Zealand now for nearly 30 years - has taken to Kiwi life and more specifically rural life, particularly well with no plans to return to the land of his birth.



Leo in his natural environment - the country!

Leo has been a dairy farmer here in Oakura and in Invercargill. He has run, developed and subdivided several farms into small and large rural subdivisions as well as lifestyle and residential properties. This first hand knowledge and expertise in the intricacies of subdividing and running lifestyle blocks makes Leo unique in the real estate business. He is keen to help other families into making good rural lifestyle choices. And there are many choices and considerations to be taken into account when looking at and then buying a lifestyle block. Considerations such as water supply, fences, easements, power, stocking units, animal welfare and feeding requirements, sewerage, schools and zoning, boundaries, council regulations and bylaws, subdivision regulations - all very different from what the average estate agent would be expected to know.

Leo's expertise has helped many people realise their dreams. Steve and Meagan of Oakura say Leo is very professional and efficient. They found Leo to be sincerely honest, informative and not only enthusiastic but highly capable to resolve any issues and/or challenges as they arose. Shirley says similar adding Leo worked tirelessly to keep her informed and he always went the extra mile to achieve a great result.

Leo hasn't always been a farmer or real estate agent, his background is in owning and running a landscape design and construction business which he set up when he first arrived in New Zealand and this environmental awareness also adds to his expertise.

Leo has three sons who attended the local Omata School and are currently at NPBHS and PIHMs. While his sons attended Omata School Leo coached sports teams and involved himself in the school community along with the farming community and it is his love of the rural aspect that makes Leo passionate about selling and buying lifestyle blocks in this area.

Contact Leo for a free market appraisal and for help in making the move to your own piece of paradise in our community.

by Kim Ferens

Val Deakin Dance School

The Val Deakin Dance School will be having its annual Dance School Recital on Saturday and Sunday, December 12 and 13. There are performances at 1pm and 3pm on the Saturday and 1pm on the Sunday. The performances feature children aged 4 and up to mature adults dancing an exciting range of dances of many different genres – ballet, character, national, modern, tap, comedy and ballroom dance. There are lovely colourful costumes and an enormous range of musical types on offer.

Students performing attend the Dance School in the Oakura, New Plymouth and Hawera Studios. Tickets for the Recital are available by phoning 06 752 7743 after 9:30 am.



The Val Deakin Dance girls in action.

ULTRA FAST IS COMING...

ULTRA FAST BROADBAND IS COMING TO OAKURA IN FEB 2016.

SO BE FIRST TO GET UFF + PHONE LINE FROM \$79!* CALL US TODAY TO BOOK YOUR CONNECTION ON **0800 123 774.**



Your local broadband provider.
www.primowireless.co.nz

*Terms and conditions apply. Standard toll charges apply to all VoIP phone lines. Please visit our website for more information.

oakura school news

ART 2 CREATE EVENT

Students at Oakura School are so lucky! Our teachers always make sure that we have amazing and exciting opportunities in our learning. A recent extra opportunity that we got to experience in the last week of term 3 was the Art 2 Create event.

Art 2 Create was a two day experience where students got the opportunity to work with an experienced artist or teacher of their choice. Students got to extend their skills and knowledge and work on a big project over the two days that they normally wouldn't get a chance to do in their own classrooms. At the end of two days the best two pieces of art from each activity were put into a silent auction. The pieces of art that were developed were amazing, it was easy to see how there is such an incredible range



Silent Auction art influenced by Brenda Cash.

of art talent and skill in our school and community. This whole experience was made possible by Yulan Imhasly and Gloria Pronk-Jones who are two of our Year 8 art leaders.

Thank you so much to Brenda Cash, Susan Imhasly, Margeret Scott, Anneke Moore, Kris White and Ellie Field for taking the time to support this event and teach our students. A big thank you also to Julie Salisbury for contacting the artists.

SPEECH FINALS

Every year students at Oakura School do speeches as part of their learning. The Year 5/6 classes completed their speeches at the end of term 3 and the Year 7/8s completed theirs in the first week of term 4. The students are able to select their own topics to write and speak about from and they can be humorous, persuasive or informative speeches. The year 7 & 8 students have the opportunity to compete for the opportunity to go to toastmasters. Congratulations to Robbie White who won our school competition and represented our school last Friday night. Well done also to Fletcher Ferguson and George Lehrke who also got a placing in the school Year 7 & 8 competition. The other Year 7/ 8 finalists were Michael Gibbon (year 8), Belle Evans (year 7), Maya Jackson (year 8), Arizona Boddington (year 7), Zac Aldam (year 8) and Quinn Jackson (year 7).

These were the finalists in the Year 5/ 6 competition:

Brodie Ferguson (year 6), Lily Stoddart (year 6), Amy Parr (year 6), Hayley Meyburg (year 6), Caeley Hattle (year 6), Francesca Carthew (year 6), Ryan Waite (year 6), Samuel Salisbury (year 5), Gabriel Carthew (year 5), Hunter Robertson (year 6), Bella Moodie (year 6), and Chloe Goodkind (year 6).

By: *Chloe Walshaw (Age:12) Michael Gibbon (Age:12), Adam Bridges (Age:13) and Melanie Bishop (Age: 12)*

— Professional — PROPERTY MANAGEMENT



- Legal tenancy agreements
- Reliable rent collection
- Financial management reporting
- Regular property inspections
- Repairs and maintenance service

Let me manage your rental...

Robyn McDonald

PROPERTY MANAGER | OAKURA BRANCH

M 027 308 2306 | E robyn.mcdonald@eieio.co.nz



• OAKURA • OKATO • COASTAL

eieio.co.nz

kitchens by glenjohns

- design
- manufacture
- install



NKBA
Kitchen Designer
of the Year 2008

06 759 0940

www.glenjohns.co.nz

Showroom, corner Eliot & Molesworth Sts, New Plymouth

We build homes
you'll love
to live in



Oakura owned and operated
Master Builders.

Site Specific Design and Build
services.

Quality built, innovative small and
large homes.



Call Michael van Prehn

027 555 7066 or 0800 889 880

taranaki@navigationhomes.co.nz



A Meal without wine is called Breakfast

BACH BREAKFAST Rashers of locally cured Bacon, our own meaty Sausage, seared Tomato Free Range Eggs any style, Home-made Potato & Vege Hash Cake, and Toast

***vv BACHMUESLI** Our own Sensational Macadamia Muesli Barbara's recipe with Macadamia nuts, Brazil nuts, Almonds, Oats & Agave syrup- baked till deliciously crunchy and served with Yoghurt, Chunky Honey, Blueberry conserve & Banana (specify if vegan)

V*GF BRUNCH STACK Our Big Home - made Potato & Vege Hash Cakes layered with free - range Bacon, (or Haloumi for Vegetarian option) and topped with Avocado, Sour Cream and our Sweet Relish

V NEW YORKER FRENCH TOAST Thick, Spicy Raisin Bread sandwiched with our Chunky Peanut Butter & Bananas dipped in eggy batter & fried in butter. Drizzled with Maple Syrup & dusted with Cinnamon

V*GF PANCAKE STACK 3 thick soft pancakes layered with our jammy Rhubarb & Plum Conserve, And served with Yoghurt or Whipped Cream (Available Gluten Free upon request)

***V PESTO PILE-UP** One Poached Free Range Egg on a stack of Avocado, Spinach & Sliced Tomato on toasted Ciabatta spread with Basil Pesto. Topped with our Sweet Relish

***V WALNUT TOAST** Our home - made Walnut Bread toasted & served with Cream Cheese & Our own jammy Rhubarb and Plum Conserve

Why cook -
when you can
eat out?

Bring or copy this ad
for a **FREE GLASS**
OF Bach Bubbles with
your Lunch meal



Coffee makes you Alert - and Articulate, Intelligent and Beautiful



We'll diet when the world runs out of food



How beautiful it is to do nothing,
and then rest afterwards



Pinot with Friends on the Deck. We're smoke-free inside and out



vegetarians deserve variety - cake is vegetarian

**OPENING
HOURS**

Monday Tuesday
CLOSED

Wed Thurs Fri
9.30am - 4pm

Sat and Sun
9.30am - 5pm

Wine Card



BACH
ON BREAKWATER
Cafe

(06 7696967)
Ocean View Parade
New Plymouth
www.bachonbreakwater.co.nz



Spotswood College

TERM 3 OVERVIEW

As usual our last term was busy with students and staff involved in a range of academic, sporting and cultural activities including:-

TSSSA Events

Mounting Biking

Skiing & Snowboarding

Badminton

Small Bore Rifle Shooting

8 Ball

Table Tennis

A visit from our Japanese Sister School Hatsukaichi Senior High School.

Fonterra Taranaki Science Fair.

Open Night.

Attitude Presentations to all Year Levels.

Spelling Bee Competition.

Methanex Mathematics Spectacular.

Fusion Language Festival.

Hatrix Band Jazz Competition.

Winter Tournament Week.

Course Selection Evening and Processes.

Senior School Examinations.

Social Science Trip to Vietnam.

BP BUSINESS CHALLENGE

From Monday the 21st till Wednesday 23rd September 2015, eight Year Ten students from our school attended the BP Business Challenge run by the Young Enterprise Trust. All the students were well presented and well spoken, as they participated in a business focused challenge where they formed a virtual company, with organisational structure and director roles. Students devised a product which solved a problem then researched the product, targeted a market and identified the competition. From their work students prepared a business plan and delivered a 10 minute presentation to a panel of local judges.

INTERNATIONAL COMPETITIONS AND ASSESSMENTS FOR SCHOOLS (ICAS)

This year 41 Spotswood College students from Year 9 - 13 participated in the ICAS English Comprehension Competition. They were awarded 4 Distinction, 15 Credit, 2 Merit and 20 Participation Certificates.

The English Faculty congratulates ALL participants on their efforts and achievements.

The International Competitions and Assessments for Schools are independent evaluations of students' skills and knowledge in core learning areas and provide insight into students' understanding. The skills and understandings tested are important indicators of success in school and

beyond. In 2016 the Spotswood College English Faculty will be offering students the opportunity to sit not only the ENGLISH COMPREHENSION Competition but also the ENGLISH WRITING Competition.

SPOTTY IDOL

In the last week of Term 3 we held our Spotty Idol Talent Quest Evening. As usual the talent demonstrated though the 16 performances was outstanding – check it out on Facebook.

TERM 4

Term 4 is always an exciting mix of celebrating the learning success of one year whilst planning strategies to improve student achievement for the next year.

Senior students are completing internal NCEA Assessments as well as studying and preparing for their external assessments. Mr Knappton has provided all students, through their Whanau teachers, with an up-to-date record of their progress toward NCEA. Teachers and students are working in partnership to put in place next step learning strategies so that students achieve at the very best of their ability in the NZQA Examinations which begin November 9th.

As a school we are revisiting our Strategic Vision Values and Plans to ensure that they are well understood by staff, students and our wider community. With the pace and constant nature of change in education it is essential that our planning and decision making is based upon a solid and coherent strategic base and that our annual planning is clearly linked to student need.

COMING EVENTS

2nd November El dia de los muertos cultural day.

3rd November Senior Prizegiving in the Hall – 7.00 pm.

9th November NZQA External Examinations begin.

16th November Year 9 and 10 Examinations begin.

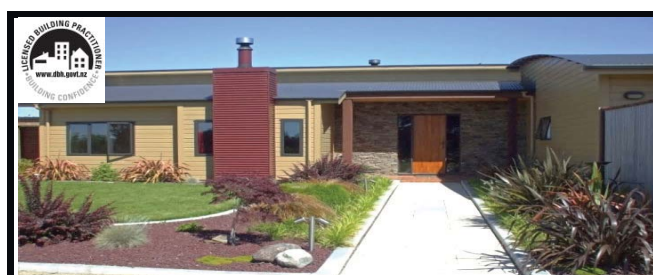
18th November International Students Graduation.

26th November Year 8 Transition Day.

11th December Junior Prizegiving.

As usual should you have any queries regarding our school, please contact me accordingly.

Mark Bowden, Principal



kate whittaker design ltd
designer of new homes and home alterations
concept plans. building consents

Oakura 75 27672, 022 0789790

SPOTTY IDOL



David on trumpet.



Andee.

The dancers.



Your Local Real Estate Team

Supporting and working for our community



McDonald
REAL ESTATE
MREINZ LICENSED REAA 2008 LIMITED

Okato Vets -

THEY DON'T JUST LOOK AFTER COWS!

The Okato Vet Clinic has undergone big changes within the last couple of years and as a result there are now a few new faces. The retirement of Brian Milestone, and more recently Dave Lilley, was truly the end of an era. (Although they were dusted off to feature on the clinics float for the Okato 150 yr celebration parade back in March). Senior Veterinarians Peter Morgan and Stacey Bateman have now taken over the reins. Peter joined the Okato Clinic as a new graduate 23 years ago. Stacey came to Okato more recently, from Inglewood via Manaia, with 20 years experience.

Gina Milestone graduated in 2002 and has been working at Okato for eight years. Clarissa Benton joined the team in August and James Bruce is due to join them at the end of November. What has not changed however, is the friendly and personalised service that people have come to love about the small locally owned and operated practice. Whether it is from the vets themselves or clinic staff Marie, Denise and Nicola - the entire team is friendly and efficient.

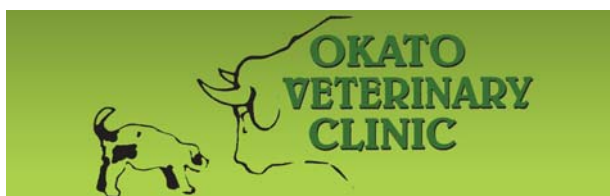
All of the vets are experienced with animals, both the large and small variety. While they have a wealth of experience on dairy farms, they also have an ever growing list of cats and dogs coming to visit. (As well as the occasional lamb, goat, pig, rabbit and bird).

As all pet parents know, our furry friends require a great deal of love and care. The staff at the Okato Vet Clinic can help with all of your pets health needs including vaccinations, regular preventative treatment for fleas and worms, micro-chipping, de-sexing, nail clipping, routine

Okato Vet Clinic reception - Left to right, Clarissa Benton, Marie Dudley, Gina Milestone, Peter Morgan, Denise Fenner and Stacey Bateman,.



The Okato Vet Clinic team dressed as Dalmatians in 2014's Around the Mountain Relay. You may also have seen them dressed as Reindeer in the Okato Xmas parades! When they aren't busy caring for peoples' pets and livestock, the team definitely get out and about.



Corner Old South Road and
Cummings Street, OKATO

Monday to Friday: 8.30am – 5.00pm

Telephone: 06 752 4335

After Hours: 026 107 088

Email: okatovet@actrix.co.nz

VETERINARIANS

Pete Morgan BVSc

Stacey Bateman BVSc

Gina Milestone BVSc

Clarissa Benton BVM&S

**Mention this ad/article and receive 20% off a bag of
Royal Canin Pet Food (Maintenance Range)**

teeth cleaning and polishing (as well as more advanced dental procedures) and nutritional advice.

And for those of you who maybe considering, or planning, on becoming new pet parents, Okato Vet Clinic can help you with all the advice you need with helping your pet settle into its new home. In stock is a comprehensive range of flea and worming products, and also the Royal Canin premium range of cat and dog food. The Royal Canin pet food range is specially formulated to meet the nutritional

needs of your pet, according to their age, size, lifestyle and breed.

For instance the dietary requirements of a 4kg Maltese Terrier will differ to that of a 50kg Bull Mastiff. Just as the nutritional needs of a kitten differ greatly to that of an elderly cat. And our clients report that their pets really love it!

The clinic has X-ray facilities and a well equipped operating surgery. The vets have experience in carrying out routine surgical procedures through to more complex orthopaedic and soft tissue surgeries. They also have a close working relationship with Massey University and other vets who they are able to refer more complex cases to.

The vets have an on-call 24 hours a day service, so are available to help with any emergencies out of hours.

They love animals as much as you do, so naturally they treat your pets as their own!



Receive an extra treatment *FREE!*

Purchase any 3 pack of NEXGARD SPECTRA[®] and receive your 4th month treatment FREE!



* While stocks last. Single treatment pack will be same size treatment as 3 pack purchase.

PROUDLY AVAILABLE FROM YOUR LOCAL VETERINARY CLINIC




Local Business Directory



1 Victoria Road, Oakura. Ph 06 752 7485
oakuraautomotive@xtra.co.nz



The Crafty Fox

Quality NZ Art, Craft & Jewellery

OPEN 7 DAYS 9am - 5pm. Ph 06 752 7291

OAKURA & COASTAL



Robyn McDonald
PROPERTY MANAGER/OAKURA BRANCH

1128 South Road, Oakura
Office: (06) 752 1340. Mobile: 027 308 2306
robyn.mcdonald@eieio.co.nz — www.eieio.co.nz



OAKURA HAIR BOUTIQUE
Main road, Oakura
Ph 06 752 7300
Mob 012 752 7400

DOMINIQUE BLATTI

CLASSICAL GUITAR STUDIO

qualified - experienced - professional

All levels, All ages, Individual & Group lessons
Classical Guitar, Contemporary Styles & Music Theory
Studio: 7 Butlers Lane, Oakura
Ph. 752 7400 Email: dominiqueblatti@gmail.com



ELEMENTARY

SOLAR & ELECTRICAL

GLEN MCDONALD - ELECTRICAL INSPECTOR
ELECTRICAL MAINTENANCE & INSTALLATION
RENEWABLE ENERGY SOLUTIONS

WWW.ESELTD.NZ
GLEN@ESELTD.NZ
027 27 27 537
027 27 27 538

We're saving this space for you!

Ph 0800 THE TOM



Surf Highway Motorcycles

- Motorcycles (Harley Davidsons, European and more)
- Ride-on lawnmowers • Jetskis
- ATVs/UTVs • Small engines

Located in Oakura, covers New Plymouth and coast
Call Brian on 027 435 5289

Highway 45 Handyman

Carpentry, Joinery, Gardening, Painting,
Home Maintenance, etc., etc.

NO JOB TOO SMALL

Call Scott on 022 658 1889
Email: scottwallace30@hotmail.com



Photos for you

06 757 2815 www.photosforyou.co.nz



2012 LIMITED

OAKURA AUTOMOTIVE

PANEL REPAIRS • MECHANICAL SERVICES • HIRE CENTRE

Repairs for all Insurance Companies.

Facilities for small and large cars, trucks, trailers, tractors and motorcycles, etc.

Warrants of Fitness. Servicing.

Competitive Tyre Prices. Mechanical Repairs. Maintenance.

Full Workshop Facilities.

Log Splitter. Mulcher. Trailers.

Concrete Gear. Gardening Equipment. Scaffolding, etc.

CALL HADDEN RYAN
FOR YOUR LOCAL and CONVENIENT

WOF SERVICE

P: 06 752 7485 M: 027 544 0005
F: 06 752 7485 E: oakuraautomotive@xtra.co.nz

1 Victoria Road, Oakura, New Plymouth

OAKURA COMMUNITY - WHAT'S ON

PHONE 0800 THE TOM FOR ADDITIONS OR CHANGES TO YOUR LISTING

Indoor Bowls. Mondays 7.30pm at Oakura Hall. Ring Mike Vickers 752 7881.

JKA Karate. Tuesdays at Oakura Hall 5.30-6.30pm. Thursdays at Oakura Hall 6.00-7.00pm. Contact Jim Hoskin 752 7337.

Mini Groovers. Music and movement for preschoolers! Tuesdays 10am during school terms, now at St James' Hall (opp. Oakura Hall). Gold coin donation. Contact Sara Matheson on 021-294 6896.

Move It or Lose It - fitness classes. Oakura Hall, Wednesdays & Fridays, 9.30am, Contact Gloria 752 7442.

Oakura Bowling and Social Club. Bowling tournaments begin September through to April with both mid-week and weekend games. For information contact Steve Muller on 06 757 4399.

Oakura Playcentre. 14 Donnelly St, Oakura. Sessions run Mondays, Wednesdays and Fridays 9am-noon during school terms. Visitors welcome. Ph Kate Garner on 021-254 4769.

Oakura Pony Club. Contact Robin King ph 751 0300.

Oakura Pool Club. Meets every Wednesday evening 7pm @ Butlers Reef over winter. Phone Chip 027 621 4999 or 752 1004.

Okato Squash. Club nights on Mondays from 7pm, everyone welcome, phone Darryl Gibson, Ph 06 752 4804.

Omata Playgroup. Meets every Thursday, 9.00am at the Omata Community Hall. Ring 751 2308 for next session date. All parents and pre-schoolers welcome.

Oakura Tennis Club
Monday 9am-2pm - Ladies Midweek Competition.
Tuesday 3pm-5pm - Junior Coaching.
Wednesday 3pm-5pm - Junior Coaching / Hot Shots Tennis.
6pm-7.30pm - Ladies practice night.
Thursday 5.30pm-7.30pm - A Grade players practice.
Friday 4pm-8pm - Junior Interclub competition.
Saturday 9am-4pm - Sofie Cup and A grade Competition.
Contact Club Secretary, Jackie Mitchell on 06 752 7013.

Pippi's PT and circuit training, every week day morning 9.30am-10.30am and Tuesday and Thursday evenings 5.30-6.30pm. More details call Pip 021 1041 851.

Probus Club. Meets once month at Kaitake Golf Club rooms on the 3rd Friday of every month at 10am - 11.30am. Contact Barry Goble 752 7254, or Betty West 752 7816.

St James Church, Oakura. Morning worship 10.00am, 2nd and 4th Sundays of the month.

St John's, Omata. Morning worship 10.00am, 2nd Sunday of the month.

Val Deakin Dance School. Oakura Hall. Saturday mornings. Pre-school dance classes 9:30 – 10 am. Beginners' Ballet dance class 10.00 – 10:45 am. Contact Val on 752 7743.

Also classes for pre-schoolers to adults in ballet, jazz, tap, modern and ballroom (beginners to advanced) at the Dance Centre in New Plymouth.

Volkswagen Club. Regular events range from car rallies, the YMCA climbing wall, camping, BBQ get togethers and sharing good family times and knowledge. Contact President: kirk@taranakivw.co.nz and Secretary: bryan@taranakivw.co.nz

Yoga Classes. Oakura Church Hall, Wed at 9.15am, Fri at 6am, (call Kate to book your class), Fri at 9.15am. Everyone welcome. Contact Kate Evans 027 203 7215.

Phone 0800 THE TOM
to place your community listing



Planning for:

- WEALTH CREATION
- SECURE PERFORMANCE
- FARM INVESTMENTS

by way of syndication
and expert management

Phone/Fax: 06 758 3688 Email: info@farmventure.co.nz www.farmventure.co.nz

Farm Venture Consultancy Limited trading as Farm Venture