

## this month

### Busy year for local inline skater - Clare Aiello



Local Omata teenager – Claire Aiello competed at the Oceania Rollersports Championship in New Plymouth recently where her team – the under 16 year junior women finished unbeaten. The Oceania competition is played against Australia and was held in New Plymouth for the first time. Following on from this success, the New Plymouth Rollersport Club will host the National competition for 10 days in September. This success is in no part due to the brand new facilities at East End and the competent organisation by the club and in particular Krystyna Beardman, the Oceania organiser. For Claire, the Oceania's are the start of a busy year with a

training camp in Wanganui in June followed by a trip to Ontario, Canada at the end of June to play for the Can Am Cup and then the 16U World Inline Hockey Cup. This is the first time ever a New Zealand Junior Women's Team has been invited to participate in either of these tournaments. The 17 day trip will involve playing provincial Canadian teams and then world teams. This will be a huge event for Claire to represent New Zealand at but comes at great financial expense for the family. Claire's mother Jan says the trip will cost them about \$5000 and the whole team over \$70,000. Sponsorship isn't very forthcoming for an up and coming sport like inline hockey and while Claire has a high profile locally, the sport as a whole doesn't attract the sponsorships that rugby, netball and basketball attract but if local businesses want to support Claire and be visible overseas the Aiello's would love to hear from them.

So what does it take to be a New Zealand representative? Father, Doug, an ex-pat Canadian would have to be the reason the family first became interested in inline hockey.

*continued on page 26*



Oakura rocks

Page 16



A couple of mover and shakers

Page 23



Pony Club wins

Page 25



Spot the difference

Page 11

# tom

**tom** is a free, monthly publication delivered on the second Wednesday of the month to all homes and post-boxes from the city limits to Dover Rd.

### **The Team**

Catherine Jones, *ph* (06) 751 3305

Tracey Lusk, *ph*: (06) 752 7875

Belinda Tran-Lawrence, *Sub editor*

Kim Ferens, *Features ph*: (06) 7511519

Sandra Lewis, *Advertising ph*: (06) 751 0177

25 Jans Terrace, Oakura  
**oakuramessenger@xtra.co.nz**  
**www.tompapers.com**

**Points of view expressed in contributed articles are not necessarily the views of TOM.**

## Talk to Tasman Toyota



### Today

- NEW VEHICLES
- SIGNATURE CLASS
- LATE MODEL NZ NEW
- FULL SERVICE FACILITIES
- PARTS and ACCESSORIES
- WOFs
- WARRANTY SALES

Ph (06) 769 9933  
Fax (06) 757 5246  
585-595 Devon St East, NP  
[www.tasmantoyota.co.nz](http://www.tasmantoyota.co.nz)



**Tasman Toyota**  
*expanding horizons*

**FREEPHONE 0800 699 933**

## GARDNA CARPET SERVICES

For the Very **Best** in Carpet Care

**Phone 06 758 0837**

223-225 Devon St West, New Plymouth



## From Mayor Pete



NEW PLYMOUTH DISTRICT COUNCIL  
[newplymouthnz.com](http://newplymouthnz.com)

Hi folks!

I've always said that the best ideas and initiatives come from you – the people who live in the district. So now, my request for your input again...

You should have received in your letterbox a flyer that gives you a brief overview of the draft Community Plan 2004/2005.

The flyer provides highlights of the draft plan, but more information is available in a summary booklet and in the entire draft Community Plan itself – both are available from council offices, if you'd like to pick up a copy, or online at [www.newplymouthnz.com/communityplan](http://www.newplymouthnz.com/communityplan).

The draft Community Plan is the result of months of consultation with the community by way of focus groups, community meetings, a postal survey and a flyer. I'd like to offer a very big 'thank you!' to everyone who took part in the consultation: It's because of your input that we have this comprehensive draft of the Community Plan.

This next stage is the really important bit: We want to hear from you about whether you think we've got our short-term and long-term priorities right, if you think we are spending money in the right areas, and if you think any priorities are missing.

I'd like you to look at the plan from your point of view as a resident of both the city's eastern suburbs and of the district, and see if there are any improvements that you could suggest.

Among the raft of issues that we would like your feedback on are:

- The proposed rate increase of 2.9% for 2004/05, plus an increase in uniform annual charges (if you receive all three services – rubbish collection, water supply and sewage disposal – your charges would increase by \$1 a week).
- Provision in the budget of \$3 million for new capital projects – what projects would you like to see this money spent on?

It's with your input that we'll end up with a Community Plan that reflects what residents want for the coming year, as well as the next 10 years! Please be sure to get your submissions in by May 17 so that we can take on board your ideas. Your input does make a difference!

Keep the passion!

**Peter Tennent**  
**Mayor**



## Councillor's Comments

Determination of the Representation Arrangements for the 2004 elections were released by the Local Government Commission in April.

The determination was that the New Plymouth District be divided into three wards. The North ward, New Plymouth City Ward and The South West ward.

The Council will comprise of the Mayor and 14 members who will be elected as two members in the North Ward, ten in the New Plymouth City ward ( this now takes in Oakura ) and two members in the South West Ward ( this includes Okato).

There will be four communities and each of these will have a Community Board with four elected members and one member of the Council; Clifton, Waitara, Inglewood and Kaitake.

I hope to get for print in the next TOM a clear map of where the actual boundaries are, because at this stage it is not quite clear where these boundaries are determined.

Local Government NZ are looking for people to consider putting their names forward for Council or Community Boards for the next elections in October, so give it some thought. We need to ensure that Kaitake Community has a strong Community Board elected as we now have Okato part of the South West Ward. It will be important to keep a voice for this side of the mountain. Remember, though, being a Councillor isn't for the faint hearted!!!

Recently I was invited to be guest speaker at Okato Lions. After a nice meal I was interested to listen to the work this group has been doing locally. Good on you guys and girls. Keep up the good work.

Friends of Matekai Park met with Council staff and had a walk around the park this week. It was unfortunate I was not able to make it. I'm sure it was most enjoyable in the beautiful weather we have been having.

It is good to see the bank being tidied up by Donnelly Street, and the good news is this week the Council has agreed to continue with the ponga wall around to the corner. Thanks to Helen Fleming for keeping on at the Council on this issue and thanks to Lyn Bublitz as well. The contractor has finished his work at Corbett Park, and Parkscape will now do some work there to finish off.

Remember you have recieved in your letter boxes your draft community plan flier. Please fill these in and return them to the council if you wish to have your say. This is the first time the Council has had to make a ten year plan, so let us know what you think.

Until next month

Regards **Pam Street**

- Warm, comfortable farm hospitality
- Ten double rooms with en suite bathrooms
- Dinner, bed and breakfast, licensed bar
- Walking distance to Pukeiti
- Farm tours and working dogs





**Tel 06 752 4469**  
**575 Upper Pitone Road**  
**Okato, Taranaki**  
**www.patuhafarm lodge.co.nz**

www.tompapers.com

All the Inspiration you need.

CURTAINS  
 BLINDS  
 DECORATIVE RODS  
 GREAT PERSONAL SERVICE

Accent on Curtains

experience you can trust

*Roger and Christine Gordon*      *ph (06) 758 3199*



Relax and let me do the work

Jeremy Pritt

Landscape Construction

Phone: 025-750 243 or 06-752 7142

get your weekends back

let LAWN RANGERS



mow the lawn and trim the edges

ring Ross & Cathryn Buttimore 025 240 9481 / 752 7316





**Hon. Harry Duynhoven**  
MP for NEW PLYMOUTH

**"The Working MP"**

158 Tukapa St  
New Plymouth  
Ph. 753 3211 Fax 753 2711



**24 HOUR ASSISTANCE**  
FOR URGENT OR  
COMPASSIONATE TRAVEL

For all your business and  
holiday travel requirements



**STARS TRAVEL**

11 Devon St West, P O Box 814, New Plymouth  
Phone: 06 757 9795 Fax: 06 758 5393  
email: maree.schumacher@starstyl.co.nz

*After hours phone*

Brent or Maree Schumacher  
on 06 753 4711 or mob 021 478 277



# Hon. Harry Duynhoven MP for New Plymouth

## Remembering what's important

I hope this column finds you well in the post Easter period! I know I certainly enjoyed the chance to spend a little extra time with my family.

Easter is now one of the few holidays where shops are not legally able to trade, which is probably why it is one of my favourite holidays!

If you did venture into the city during the Easter break, you may have noticed that the odd café and restaurant had added an extra surcharge to the goods and services they offered.

The reason for this was because of the new Holiday Act introduced by the government, which means that if a worker spends their Easter holiday working, employers now have to pay time and a half and a day in lieu. This is commonplace in many countries. Many employers chose to pass this extra cost onto consumers, which they are entitled to do, just as we are entitled to choose to eat out over the holidays, or to eat at home.

We can't deny that society is changing. Every December I hear people comment that the year has simply flown by, and it seems to get worse and worse for every candle we add to our birthday cake!

Today many New Zealand workplaces operate 24/7, any working families depend on two incomes for their lifestyle, and employment arrangements are developed in the workplace, based on the needs of employers, employees and their representatives.

The pace of life is certainly increasing, and the time we have to spend with our family and friends is usually the first thing we start to cut back on when the pressure builds. I believe it is time to try and bring things back into balance. It is time we gave a little extra to those who can't enjoy public holidays with their families because they are working to help us enjoy ours.

Thank you for reading this column

**Hon Harry Duynhoven**  
MP for New Plymouth

**gba** grant boniface architect

M 021 645 166  
E grant@gba.net.nz  
W www.gba.net.nz

**CAREfirst**

DR GEOFF PUTT DR CAREY NAZZER DR LUCY GIBBERD DR FANIE SCHOEMAN DR GEOFF TVRDEICH DR ALISON GADSBY

- MEDICAL CENTRE
- WALK-IN CLINIC
- NO APPOINTMENT NEEDED
- X-RAY • PHARMACY

• 8am-8pm Mon to Fri  
• 9am-1pm Saturday  
GENERAL PRACTICE APPOINTMENTS  
• Monday to Friday

Phone 753 9505 www.carefirst.co.nz  
99 Tukapa Street, New Plymouth

**Oakura**  
PANEL REPAIRS

"we take the STING out of your DING"

- INSURANCE WORK
- CRASH WORK
- RUST REPAIRS
- RUST PROOFING
- GENERAL WELDING

Ph/Fax 06 752 7485  
By the bridge  
1 Victoria Rd, Oakura  
Mob 021 440 005  
oakurapanel@xtra.co.nz

## What were you doing on 13th April 2004

Did you ever stop to think what our community volunteers give up to attend to our emergencies and that they put themselves and their families out to help others.

On the 13<sup>th</sup> April the fire brigade were called to a motor vehicle crash at the top of the hill just north of Corbett Park. A car hit a power line head on sending it to the ground and cutting off the power to Oakura and Omata residents, fortunately the three occupants of the car escaped with minor injuries. I am sure anybody who was caught up in the traffic that evening will now appreciate how busy Surf Highway 45 is becoming and consider the role of our local fire brigade.

I spoke to Greg Newton (fireman) and this is what he said:

*TOM Where were you when the call went out?*

GREG I was cooking dinner and talking to Jo Scott (operational personnel) on the phone. The power went off and as I am building a new house I thought it may have been something at my place. Then my pager went indicating the crash, hence no power and no siren. As I am currently the housewife I was at home with two pre-schoolers and no child minder.

*TOM What did you do?*

GREG As I was talking to Jo at the time we arranged to meet at the station and do hand over of children. This was very helpful. However I nearly became the victim of a fire callout myself because I forgot that I had left my elements going on the stove – with no power and an emergency this was the last thing on my mind. I did remember soon enough to call my sister in law who went and remedied the situation.

*TOM What happens if you can't arrange care?*

GREG Basically I just can not attend and as I am one of five drivers in Oakura if no one else is available then Oakura doesn't attend and either Okato or New Plymouth go.

*TOM What was the role of the brigade for this accident?*

GREG When we arrived we immediately closed off the scene to all traffic and waited for an all clear from the power board who had to disconnect the power at both ends. The problem with this situation is that the power could re root itself at any time and there would be live power that could potentially be dangerous to people near by. The brigade was then involved in traffic control.

*TOM Would this be considered an easy callout?*

GREG Yes and no. Yes because nobody was seriously injured and no because the risks involved with power lines and the effects on the traffic. Some people see flashing lights and don't see the car in front has slowed or stopped and straight away you have another accident on your hands.



Phone 06 752 1344  
Mobile 021 268 1931  
davespcservices@extra.co.nz

Don't suffer from PC rage!



**CENTRAL OTAGO STONE**  
**SCHIST**  
"for walls and buildings..."



**Tom Smithers Enterprises Ltd**  
ph 752 7562 - 027 22 44 973



- Subdivisions
- Resource Consents
- Engineering Surveys

Phone: (06) 759 5040 or 0800 BTW Survey  
www.btw.co.nz



**CONSTRUCTION**

**Ian Coutanche – Carpenter & Builder**  
**Ph: 06 752 7060 Mobile: 0211 160 974**  
6 McKellar Street, Oakura, New Plymouth

### In a nutshell

These men and woman put their lives on hold and risk their lives to save or help another. Their families play a huge part in assisting them during these call outs and for the training they need to do. If you would like to be part of this team then they want you. Greg says they need more day time volunteers and a few more women would add another dimension to the services they offer. Give them a call today to find out more. Phone 752 7677. Next time you here the siren go think about what you could be doing.

**SAVOIR - FAIRE**  
**L I G H T I N G  
 & D E S I G N**  
**KATHY QUIN**  
 133 Gill Street  
 New Plymouth  
 Phone: (06) 759 0414  
 Fax: (06) 759 0412



[www.tompapers.com](http://www.tompapers.com)

**Berridges Petfood**  
**100% BEEF!**

- FREE of Preservatives/Additives/Drugs
- 3.5Kg Bags \$10
- =6 minced frozen blocks

**Enquire NOW!**  
 Phone 7512779

**HEYDON PRIEST ON THE COAST FOREVER**

**bp OAKURA**

**The first and last stop on Surf Highway 45**

PETROL • SERVICING • COFFEE AND FOOD •  
 MECHANICAL REPAIRS • RUBBISH BIN HIRE

**Surf Highway 45 - Oakura**  
 OPEN 6AM - 9PM EVERYDAY • PH (06) 752 7753

**New Zealand Modern School of Music**

**LESSONS AVAILABLE  
 PIANO, KEYBOARD AND GUITAR  
 IN YOUR AREA.  
 TUITION FOR ADULTS AND CHILDREN.**

Margaret Green Piano Keyboard 7527898  
 Dominique Blatti Guitar 7527400

**For more information contact Gail Boswell Ph. 7575166**



## The "Big Tick" needs treatment

The April issue of TOM presents an article supplied by the NPDC stating "Nearly 80% of respondents believed that Oakura should have a new sewerage scheme, and nearly 78% would like to be part of it". In the same issue, the Kaitake Community Board reports "The percentage of the community surveyed who believed a new scheme is needed was 47%". Does this mean that the statistics are a fair representation of the "optimist" and the "realist" respectively? Surely a point to ponder on. And if 80% of the respondents believed we should have a new scheme, how can you have 85% of respondents willing to contribute financially to a new sewerage system or am I missing the point? It would also have been helpful if the survey had extracted from respondents in favour of a new scheme why they felt a new scheme desirable. To some extent, new development was on the minds of 73% respondents but it is unclear whether the 73% represents the pro-sewerage respondents. If new development is the prime reason for introducing a new scheme, then it is vital we have a strategic coastal plan in place before new development and high density housing destroys the very nature of the place we love, and have tried to preserve over the years.

Trying to preserve our lifestyle and the natural assets we have at our back door has been going on for years. Way back in November 1976, the then Oakura Environment Society was very active in objecting to proposals put up by the old Taranaki County Council on a whole range of issues that were seen as a threat to the future well-being of the community and the coastline. The Society became aware of dye tests being conducted off the Oakura River mouth for a possible pipeline to carry raw sewerage out to sea. Thankfully that never eventuated but the County Council followed up with a proposal for oxidation ponds on the escarpment overlooking Corbett Park. Again, the proposal was challenged by the Community and eventually shelved. The Society was also active in 1976/77 in trying to get a "Coastal Protection Zone" policy established with the County Council with approximate boundaries extending from Koru Rd to Ahu Ahu Rd and inland from the Coast to the National Park boundaries. Today, some 27 YEARS later we still do not have a comprehensive integrated Strategic Coastal Plan that ensures the preservation of our lifestyle and natural assets.

It is encouraging to see in the New Plymouth District's Draft Community Plan 2004/14 that provision is made for a coastal management strategy to be linked to any sewerage system proposal. As a community, we should insist that a coastal management plan, particularly targeting Oakura and the surrounding environs, be a "stand alone" Council commitment irrespective of any sewerage proposal further down the line. It really is a



question of priorities, and if we don't get the plan in place first, we will lack a resource or a point of reference against which we can test the appropriateness or relevance of any future proposal or development.

In this issue of TOM, there is an article written by Doug Hislop which was the basis of a submission he prepared for the NPDC to consider. This is an outstanding evaluation of the need for a long term strategic coastal management plan, well worth a read and supporting.

Any proposal for a new sewerage system will no doubt be controversial. Previous attempts to persuade the Community to install a sewerage system have centred on arguments of:

- pollution of rivers and beaches
- septic tanks not working
- its never been cheaper

encourage growth to make Oakura more prosperous

At the insistence of the community, tests were carried out by the regional Council on the contamination of our rivers. While some pollution was due to sub-standard septic tank installation, the main offender was rural farm run-off entering the streams. The sensible approach to resolving this undesirable state was to target the offending parties and assist them overcome the problem. A new sewerage system would not have solved the problem of effluent and fertiliser run-off from farms. And why should the Community foot the bill for a few tanks that were inadequately installed?

Years ago, many of the beach bachs had little more than a hole in the ground to take the weekend's wastewater. Once batches became full time homes, the need for an improved on-site waste disposal system (septic tanks) became desirable. Even then, some tanks were installed that did not meet the specification or were never inspected by the building Inspector before everything was covered in. Today, on-site waste disposal systems receive far closer scrutiny and provision has been made for ongoing maintenance inspection by approved contractors. The Oakura Environmental society did a lot of work with the Auckland University on the effective use of septic tanks and that information is still available from me. A leaflet setting out management guidelines for home owners to manage their septic tanks used to be sent out to new home owners. Hopefully, this practice is still continuing today. The septic tank needs to be cleaned regularly, every 3-5 years.

When we look back with the benefit of hindsight, it is easy to conclude that things were cheaper then than today. Wages were also less in earlier years. The important point to focus on is the ability of a community to pay for major capital works. The \$2.4million sewerage proposal in the late 70's was a huge burden for the then 440 ratepayers.

*Continued on page 8*



**Dior**

Fine lines  
Lack of radiance  
Less tone...

First signs of ageing?

It's time for action!

**CAPTURE  
FIRST ACTION**

**CAPTURE  
FIRST ACTION**  
CRÈME LISSANTE JEUNESSE  
HAUT-DEFENSE PE-PIGMENT CRÈME  
Dior

Unichem  
**Lander  
& Black  
PHARMACY**

Fly Buys.

Devon Street East,  
New Plymouth  
Phone 06-758 3353  
Fax 06-758 4992  
Email [blander@xtra.co.nz](mailto:blander@xtra.co.nz)

**2004 TARANAKI  
CHILD PORTRAIT COMPETITION**

WIN \$1000 WORTH OF  
VOUCHERS FROM

 **CCWARD**  
NEW ZEALAND

Ages 0-16  
Sitting Fee \$20 (usually \$50)  
**BOOK NOW**  
Ph (06) 759 9976

**376 DEVON ST EAST, NEW PLYMOUTH**

**NZIPP PEOPLE PHOTOGRAPHER OF THE YEAR 2003**






**The DECORATING GURU**  
for decorating advice  
you can trust

Ph/Fax: 06 752 7451  
51 Messenger Tce, Oakura  
Mobile: 027 283 1276

Barry Tyson

Registered Master Painter New Zealand

**www.tompapers.com**




**I sell from the heart  
because I care**

Pat McFetridge  
A/hours 06 7524010  
Mobile 027 27339 Office 06 7568889

In association with  
**TSB Realty**  
It's easier with us.

**McDonald**  
REAL ESTATE LTD  
MREINZ



**Dental House**  
p.06 753 6298

Robert Wagstaff  
BDSElizabeth Priest BDS  
Marg Doidge - Hygienist

**270 Carrington Street, New Plymouth**

**www.thelawyers.co.nz**  
**1 Dawson Street, New Plymouth**  
**Phone 7580884**

**Govett  
Quilliam**  
**THE LAWYERS**

The 2004/14 Draft Community Plan shows a capital spend of \$7million over 10 years plus an operational cost of \$9.1million over 10 years. This needs to be compared to a septic tank system cleaned every 5 years at approx \$250 i.e. \$50 per year for an on-site waste disposal system. We have to be careful that the burden of meeting the costs of a new scheme does not force people out of their homes particularly those on fixed incomes. These are the people that have helped to make Oakura a special place for the wider community to enjoy.

It is understandable that the business sector of Oakura would want growth. More people, more spend, thereby providing a level of sustainability for those businesses. As a community we want our businesses to be successful but there must be a balance between controlled growth and preservation of the lifestyle and natural assets in and about Oakura. Hence the need for a coastal management plan.

The irony of our present situation is that over the years, the community has sought all manner of means to protect its lifestyle, only to find those efforts have made the place too attractive to outside enterprising interests. The introduction of a new sewerage system will only fuel that interest further. A plan will go along way to securing our present lifestyle.

In your judgments hereon, it may help to keep things in perspective if we reflect as a community, that the world is not given by its mothers and fathers but borrowed from their children.

**Rex Ward**

## Submission to the NPDC by Doug Hislop

To develop a long term strategic coastal management plan for Oakura.

### The Issue

#### Population Growth:

Across the New Plymouth District Council region, residential development is increasingly concentrated along the coast. A 'hot spot' of coastal development is undoubtedly the Oakura area. In general, Oakura is seeing rapid changes and is coming under significant pressure through perceived desirability (fashion) creating population growth and related development.

Coastal development is a worldwide phenomenon and Oakura is one of only three coastal communities on the west coast of the North Island that has protection from the prevailing weather patterns. As a consequence, Oakura is a seaside community that has grown, and will likely continue to grow, in popularity, due to its climate, geography and close proximity to a major urban population.



## The Outcome:

An escalating development pattern, mainly linked to economic opportunity and based on intuition, with little or no scientifically based environmental management, is becoming apparent. The continuation of this approach could damage the very natural resources that make the Oakura coastal area so valuable to the region. Current planning tools, varying in age and structure as they do, may not protect the region's coastal resources, especially when the high market value of coastal real estate brings increased pressure for 'consent variation'. Developments, such as growth in the Oakura village and the conversion of acres of farmland into quasi-urban use, will exert an ongoing (and increasing) impact on the environments of coastal stream catchments and beach zones. The long-term cumulative effects of these pressures, without a comprehensive and integrated planning strategy, are environmentally frightening. Consequently, new strategic planning tools are required for the long-term sustainable management of the Oakura coastal area.

There is a regional Coastal Plan for Taranaki but it only addresses the zone from 12 nautical miles out to the mean high tide level and only identifies the Oakura river mouth and Oakura Beach as areas of outstanding coastal value. It is not an adequate instrument to reconcile the pressures outlined above with coastal environmental values.

## Solution

### An Integrated Coastal Management Plan:

Long term strategic planning is required, based on an integration of existing local and regional government mechanisms. Broad stakeholder participation is essential to allow for a transparent exchange of views, ensure stakeholder/community ownership and private sector involvement.

The objective would not be to prevent progress but to stimulate healthy and sustainable development of the Oakura coastal area from an environmental, social and economic point of view.

The development of such a plan fits particularly well within the Council's brief of 'promoting the social, economic, environmental, and cultural well being of their communities, taking a sustainable development approach' [Local Government Act 2002, Pt1 3(d)], as well as the long-term general objectives of its Community Development Plan and Policy on Significance.

The plan would ensure:

- A common focus;
- Future developments be considered against the strategic plan for the area;
- Certainty over who has responsibility for actions;
- Provision of consistent information;
- Provision of a universal perception about the nature of property rights;

- A transparency for stakeholders in the monitoring and evaluation process; and

Sustainable management of Oakura's natural and physical resources to afford protection of agreed values for the future.

*Doug Hislop, 31 Mace Terrace, Oakura*

# Top Print

Taranaki Offset Printers

**Perry & Sharon Squire**  
Proprietors

*Proud to be the printers  
of The Oakura Messenger*

18 Saltash Street,  
PO Box 5034,  
New Plymouth

Phone (06) 753 3497  
Fax (06) 753 3497  
topprint@clear.net.nz

**Apology:** Please note our article on Eagers Funeral Services should have been titled "Eagers Funeral Services". Our apologies to the team at Eagers.

# EAGARS FUNERAL SERVICES



**John Eagar      Casey Eagar      Brian Darth**

**Ph (06) 765 7859**  
**Broadway South - Stratford**

**Ph (06) 758 7859**  
**Cnr Devon & Henui Sts - New Plymouth**

*Chapel facilities available*



**24 Hour Service  
All Districts**



ANNB11100

9

YOUR LOCAL ELECTRICIAN

DON'T PUT UP WITH  
**Damp, Mould or Condensation**

ANY LONGER

Let Moisture Master and  
Greaves Electrical

**SOLVE THESE PROBLEMS  
NOW**

Call 7581838  
for all your electrical requirements

**greaves**  
ELECTRICAL > AUTOMATION > INSTRUMENTATION

NP Office: 125 Gill Street, New Plymouth [www.greaves.co.nz](http://www.greaves.co.nz)

[www.tompapers.com](http://www.tompapers.com)

## Omata Meat Processors

Our company policies **ARE**

**WE ARE** there the day we tell you  
**WE DON'T** use your meat for raffles  
**WE DON'T** pay wages with your meat  
**WE DON'T** give you someone else's beast  
**WE HAVEN'T** been sued or paid out for telling  
the truth!

We believe the cheapest is  
**"NOT ALWAYS THE BEST"**

**THAT'S NO BULL\*\*\*\***

Ring us and benefit from the change

**Call Graham**  
**Phone (06) 7512359**  
**Mobile 025 483 568**

## *I Remember When...*

*... Bill Marshall - Ahu Ahu Road*



Barefoot, Bill reminisced on his deck recently when I spoke with him regarding his 25 years in AhuAhu Rd. "There used to be eight letter boxes on this road when I first shifted here and now there are over 30 letter boxes." Bill remembers that where there were once five dairy farms there are now only three. There have been many different types of horticulture and farming that have come and gone – ferrets, ostriches, pedigree dairy cows, lettuces, strawberries, avocados, feijoas, maize, asparagus, a garden centre and sheep. Some have been successful and others not. The regulations regarding subdivision have changed radically over the years; the new rules have meant smaller lifestyle blocks and more houses. Bill's son David has the AhuAhu Villa's next door and these see visitors from all over the world.

Bill bought his 66 acres of land in 1979 and fattened beef and ewes before the farm was leased out for winter grazing. In 2000, the old farm house was sold and a new one built right on the beach top with one of the most awe inspiring coastal views to be found anywhere in New Zealand. This view has had one substantial change in the last year - the sand on the beach! What was once a rocky bay is being slowly covered in sand, due in part, Bill thinks, to past weather patterns. The boat can now be launched off the beach to catch all those 20lb snappers!! Bill has noticed that the calibre of the surfies has changed too. No longer do many turn up in beaten up old cars, dropping their litter and leaving their wrecks behind, now they are mostly much more affluent and come driving four wheel drives and sporting the latest gear.

Bill ponders the changes in the future that are likely to affect Oakura – the sewerage system, zoning the school, lifestyle blocks, the elderly being priced out of Oakura, tourism and people coming from bigger cities. Should Oakura have more shops? What will the older

community members do? Will the rates go up? Should there be a Retirement Village here? Bill is a man who loves living in Oakura and is passionate about its activities – bowling, golf and PROBUS, (of which he is the President). These are all things that help cultivate the community spirit that he feels is being lost. This man who, though retired, still works as an auctioneer, (a 58 year career), and travels the world, sharp as a pin, witty and affable - a man who is in touch with, and reflects, the sentiments and concerns of others in the Oakura community.

*By Kim Ferens*

## The other Omata

The July issue of TOM featured a story on the ‘other’ Oakura - Oakura up North. This issue we feature the ‘other’ Omata which I recently discovered on my travels. It too is ‘up north’ - a few kilometres south of Russell in the Bay of Islands. Like our local Omata, the Omata up north also has an interesting history. Seemingly Omata was the scene of the first European settlement. The surrounding Bay of Islands harboured numerous whaling stations and Russell, New Zealand’s first capital. Omata was the destination for many immigrants to New Zealand and in 1835 James Reddy Clendon landed the first shipment of horses there. One of the first settlers of the time, Captain John Wright built his homestead there and went on to found New Zealand’s first provisional store at Omata supplying army barracks at Te Wahapu and Kororareka (Russell). John Wright’s premises were robbed in 1837 in New Zealand’s first aggravated burglary. A judicial system had not been established at that time, so the two culprits were sent to Sydney for trial and were hanged.



Today, Omata up north is best known for its superb luxury retreat, vineyard and restaurant. The restaurant boasts gorgeous views over the Bay of Islands and cuisine to match, in a fabulously crafted environment. If you can’t stop for a meal, it’s well worth calling in for a tasting of the local “Omata Estate Chardonnay” and to soak up the stunning views.

## Gardening with Rosemary Herb

### May Checklist

#### Flowers:

- Continue planting spring bulbs.
- Dead-head roses as autumn flowers finish and give existing roses a side dressing of fertiliser.
- Lift and divide crowded perennials.

#### Vegetables:

- Sow seeds of beetroot, broccoli, broad beans, cabbage, carrots, onions, radish, spinach, swedes, and turnips.

**Jones & Sandford**

**Mitre 10  
Gardener**

[www.tompapers.com](http://www.tompapers.com)

## W. Abraham Ltd

*Funeral Directors*

*A family tradition since 1924*



Chapel and reception lounge

Our funeral chapel and reception lounge is the largest and most modern chapel facility in New Plymouth. We are proud to offer all our client families the use of our chapel, where a service can be held, seating approximately 220 people.

We have a selection of music, families can provide their own or an organist can be arranged. Services can also be recorded on audio or video tape.

Adjacent to the main chapel is our reception and catering lounge where family and friends may gather for refreshment and a time of fellowship following the service.



Office - 27 Elliot Street

Chapel and reception lounge - 366 Devon St East, New Plymouth

Our website, [www.wabraham.co.nz](http://www.wabraham.co.nz), contains comprehensive information on all aspects of our services.

Please browse at your leisure or phone us on

**(06) 757 5210**

for answers to any further questions you have.



Enhance the ethnic feel of your room  
with the **ZEN** Furniture Range



Crafted in Black Victorian Ash  
Available at Briggs Furniture



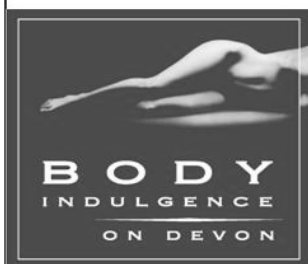
313 Devon St East  
Phone 06 758 2529

[www.tompapers.com](http://www.tompapers.com)

## Celebrate Your Body with these new products

**Viva La Soap** a beautiful range of perfumed balms, oils, creams, salts and body butters – Award Winning Australian product

**Natural Sea Beauty** from the shores of the Dead Sea, Israel, comes a magnificent range of skin care products minerals to benefit the skin



*Let us wrap your gifts  
with care & kindness*

150 Devon St East  
New Plymouth

(06) 759-0001

## A Bite of History..

### Oakura Indoor Bowling Club

Did you know....? - A Historical review by Rex Ward

- That the club was formed following a public meeting held on 8 August 1951
- That the club has existed for 52 years and plays in the Oakura Community Hall
- That the first President was Reg Jamieson who donated 4 cups for a club event known as the Jamieson Cup Competition
- That Rene Jans is the only remaining foundation member who enrolled at the initial meeting on 08.08.51. Rene became secretary in 1973, was deservedly rewarded with Life membership in 1990, and retired from the post in 1996. Her son Mike is a playing member of the club.
- That Clarice West, the mother of the late Roy West, was the clubs first secretary. Roy attended the first public meeting almost by chance. He was to attend a Young Farmers Club monthly meeting in the supper room but was invited to try his hand at bowls in the main hall. After about an hour or so of howls and hilarity, Y.F.C members decided it was time to hold the meeting they came for.
- That Norton Moller has been the clubs Honorary auditor for over 50 years. Today we acknowledge and salute that commitment.
- That Roy Grey, Patron of the North Taranaki Indoor Bowls Assoc. is also a Life member of the club and joined the club in late 1951. At that time, the club comprised 50 members. The club was financed by 27 members paying 5 years of subs in advance, netting 135 pounds. Roy has the distinction of being the first person to achieve 50 club championship titles.



535 Main South Road  
New Plymouth

Ph: 06 751 1616

**Box Hedging**  
from \$1.75

**Lonicera**  
from \$2.50

**Teurcirum**  
from \$2.50



**Open from 8am to 7pm 7 days**  
Winter hours after Easter

2 Jans Terrace Oakura Ph: (06) 752 7861 Fax: 752 7286



- That Jim Priest, a well known local identity, commenced playing at the age of 7 years and has been with the club some 50 years also.
- That 3 club members have received Gold Stars from the North Taranaki Indoor Bowls Assoc. for each achieving 5 North Taranaki Titles.
- In 1976 – Roy Green
- In 1995 – Jim Priest
- In 1999 – Shirley Marsters
- That Shirley Marsters, who joined the club in 1971, brought great honour to herself, North Taranaki and the club when she was selected for the North Island Representative team in 1995. Shirley's grand daughter, Ashleigh, is our youngest club member at the age of 13 years. In 2003, Ashleigh received the clubs "Most Valued Player" award.
- That NZ national titles were won by the following who were members of a team.
- 1990 Auckland Fours Jim Priest, Shirley Marsters
- 1994 Invercargill Fours Shirley Marsters
- That the Truth Cup, awarded at the National Championships to the woman player who goes the furthest in the Singles Competition, was won by Helen Grey in 1991 in Nelson. Helen reached the quarter finals.
- That Roy, Jim and Shirley have represented North Taranaki at the highest level, playing for the Paterson Trophy, being successful, and then playing for the Welch Trophy where 6 Paterson winners play off in the NZ final. Although unsuccessful, Curly Richards, (a retired Oakura member), was sole selector of the North Taranaki team that did win, way back in 1980.
- That the late Bev Harvey was our 1<sup>st</sup> and only Lady club president from 1991-93 and was an inspiration to us all.
- That indoor bowls is a game for all age groups as seen in our history, and the clubs strength is derived from good fellowship, life long friends, enjoyment, friendly competitiveness, and the untiring efforts of the members who have comprised the committees over the last 52 years.
- That should you wish to give our sport a try, contact Alan Bridgeman our club Captain on 752 7478 or Rex Ward, club President on 752 7849. Club nights are Mondays 7.30pm.



## THE BODY SHOP

*Skin & Hair Care Products*

Tired of waiting until you head to The Big Smoke to purchase your Body Shop products??

Well, wait no more!! They are now available right here in Oakura (& beyond). Ring / Email me now!!

**Helen (Bob) Fleming**  
Authorised Consultant

19A Dixon Street, Oakura Phone (06) 7527-048



## *Wine Makers Dinner - 9th June*

*4 course dinner with David Babich.*

*Acclaimed both internationally and in New Zealand as one of our top ten wine makers by writer Joelle Tomson.*

## *Mid Winter Christmas Dinner and Dance*

*Friday 11th June - Friday 18th June - Friday 25th June*

*Three course buffet \$48.50 per person with a free glass of Okurukuru Chardonnay.*

*Band: On Your Bike*

**Book NOW**

738 Surf Highway Omata - Ph 06 751 0787

**Harcourts**  
SINCE 1888

DEVON REAL ESTATE LTD

*Denise Ries*

deedee@clear.net.nz

Phone 06 7527969

021 363 338

*Your local sales consultant for 14 years*

**SOLD** 118b Wairau Road *Congratulations*

**SOLD** 10 Donnelly Street *Congratulations*

**Section for sale - call me for details**

If you are thinking of selling property in Oakura, Okato and New Plymouth farmlets and lifestyle blocks included



- ▲ Please give me a call
- ▲ Talk to me - express your idea
- ▲ Gain professional real estate advice
- ▲ No obligations

*Looking further a field?*

Check out my properties for sale notice board located at Subtropix (Palms for sale)



## Kia orana from The Alders

While researching a trip to Samoa recently I came across a quote from James A. Michener that was amusing:-

“If I could vacation on only one Pacific Island I would choose Rarotonga. It’s as beautiful as Tahiti, much quieter, much stuffier and the food is even worse.....”  
(Frommer’s South Pacific, 1996).

Aha! I’m not the only one that thinks the local food is awful!

Sure, there are some nice local foods – of course the fruit and salad vegetables are divine. Rarotongan tomatoes are the best. But for the rest, I prefer to buy imported foods from New Zealand, Australia or the USA. Admittedly they are more expensive AND there’s the problem of shops running out of produce for weeks or even months. At the moment, for example, there have been no potatoes on the island for the past two weeks! Last year I had to get a friend to send over Earl Grey tea bags because the supermarkets suddenly stopped selling them for three months. And then, of course, there are the items that aren’t even available here, or the ones that are so expensive you’d have to be nuts to buy them – like a head of broccoli for \$15.00 or bacon at \$40.00 per kg, strawberries at Christmas \$8.50 per punnet.

I’ve never been what you would call an adventurous cook, having always preferred other people’s cooking to my own. But I used to occasionally read cook books and try and make something new. But here – forget it. The supermarkets never have even half the ingredients you need for even quite basic recipes.

I’ve tried, really I have, to appreciate local food, like taro – a root veggie that when cooked is grey with dark veins and looks very much like a very rotten, diseased potato. I’ve tried Eke Mata – raw marinated fish. I have drawn the line at marinated sea slugs, true, but I have tried most of the local food. Yes, tried them with an open mind. And closed eyes – and pinched nose. But now I know James A. Michener thinks like me I can give up!

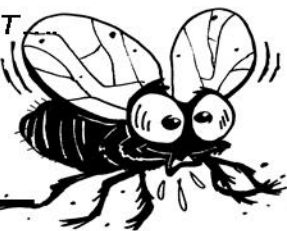
*Diane Alder*

## The adventures of Korean Kelly

Korea is an interesting country in terms of its embrace of Western culture. Its history is both long and bloody, with the peninsula being one of the most invaded countries in Asia, by Mongols, Chinese and the Japanese, who occupied the country until the end of World War II. This has led to an eclectic mix of xenophobia coupled with a love for Western fashion, music and food. The presence of the American military in South Korea for over fifty years has also resulted in many changes to a country that was previously almost a hermit state. The South Koreans have had to learn English, for trade relations and the growing export industry. They have also had to contend with a new generation of Koreans, those that see a different world on television and via the internet, and have had to change many age-old rules and social taboos that had previously been engrained into their culture.

Cigarettes, a mere two dollars a pack, were smoked only by men, never women, and especially not by

PSST



**NO FLIES  
NO ANTS  
Mosquitoes  
Insects etc...**

For a safe, natural, effective  
alternative...

Use Natural Pyrethrins

**ECOMIST®**  
Automatic Dispensers

**0800 75 75 75  
ECOMIST TARANAKI**

Our door is  
**open**  
and  
you're  
**welcome**

*talk to  
Lanette  
today*

To discuss: INCOME PROTECTION  
MEDICAL • LIFE • DISABILITY  
TRAUMA • RETIREMENT SAVINGS

**PARAGON**  
INSURANCE & INVESTMENTS LTD

Tel (06) 769 9909 email:  
info@paragon.org.nz  
52 GOVER STREET • NEW PLYMOUTH

**Quality  
NZ art,  
craft and  
jewellery**

**The Crafty Fox Ph 06 752 7291  
OPEN 7 DAYS 9AM – 5PM**



women in public. This is changing. Spitting, a common practice in Korea, which meant that the footpath was constantly covered in slimy expectoration, has also begun a regression. This is mainly due to the impact of SARS on the health consciousness of people throughout the world. Even the education system, after a recent spate of footage (from mobile phone cameras) showing children being beaten by teachers at school, is beginning to shy away from corporal punishment. My Korean workmates tell me that the beatings administered to them as children, by teachers (who all had sticks), are now a thing of the past.

Fashion is also changing. Due to Korea's strong patriotism and its embrace of the past, there will always be traditional garb, such as the *hanbok*, a robe similar to the kimono worn by Japanese. But then, there is also the West's strong influence, Burberry and Levis, Polo and Gucci, the country goes crazy for high fashion. There is concern that cheaper items may be fakes. In this country image is everything. Korea is the forerunning Asian country in plastic surgery, with breast enlargements, calf reductions, eyelid development, "western-nose" jobs and the like, all very popular. To look Western is the ultimate goal.

It is an interesting time to be in a developing Asian country. It has made me aware of the things I take for granted in NZ. It is fascinating to be here and learn so much about a country, its people and their culture. I just wish they had Export Gold...

Annyonghi keseyo

### Kelly Ryan

Kelly Ryan grew up in Oakura and is currently teaching English in Korea



**Puke Ariki**  
NEW PLYMOUTH DISTRICT COUNCIL  
newplymouthnz.com

**Oakura Library With Tara Ward**

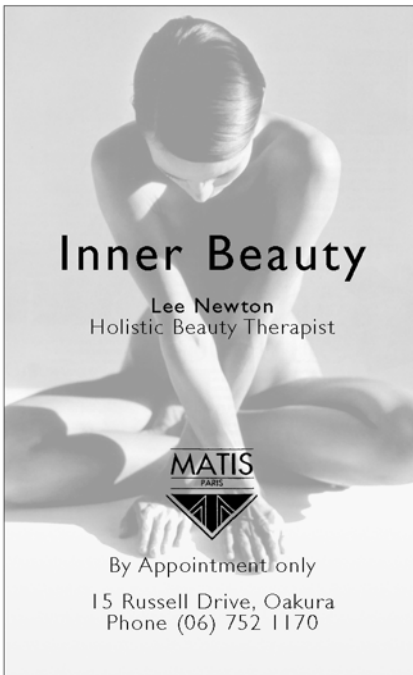


Oakura Library New Book of the Month is *Heart of Coal*, the anticipated sequel to Jenny Patrick's 2003 novel *The Denniston Girl*. *Heart of Coal* begins in 1883, eighteen years after Rose's arrival in Denniston on the West Coast of New Zealand. Rose is expected to marry Michael Hanratty, her childhood friend, but when stubborn Brennan Scobie returns to Denniston after a seven year absence, a challenge is inevitable. Jenny Patrick is a New Zealand author and *The Denniston Girl* was a best-seller in New Zealand.

Other new books at Oakura Library this month include Lance Armstrong's second inspiring autobiography *Every Second Counts*; *Brick Lane*, the Booker Prize nominated novel set in London's East End; *House of Sand and Fog* by Andre Dubus III, soon to be in New Zealand's cinemas as a movie starring Ben Kingsley and Jennifer Connelly; *The Time Traveler's Wife* by Audrey Niffenegger; *The Scornful Moon* by Maurice Gee; and to complement the fashion tips from the popular television series, *What Not To Wear 2*. We have a variety of new books on display each week.

The New Zealand Post Book Awards for children and young adults will be announced in May. The finalists this year include some exciting novels, including Taranaki author David Hill's *No Safe Harbour*, Tessa Duder's *Tiggie Tompson's Longest Journey*, *Fred the (Quite) Brave Mouse* by Murray Ball, and *Cuthbert's Babies* by Pamela Allen.

Oakura Library hours are Mon-Fri 10-12.30 & 1-4pm, with a late night Wednesday 5-7pm.



**Inner Beauty**  
Lee Newton  
Holistic Beauty Therapist

**MATIS**  
PARIS

By Appointment only  
15 Russell Drive, Oakura  
Phone (06) 752 1170



**Alley Cat**  
POTTERY STUDIO NEW ZEALAND CRAFT  
06 752 1001

OPEN Wed - Sun 10am - 4pm  
Surf Highway 45 Oakura Village



**Horizon**  
INSURANCE & INVESTMENT BROKERS LTD

Fiona Bracken  
Broker

Helping you...  
"prepare today  
for a secure  
tomorrow"

Phone  
(06) 759 2351  
Mobile  
027 432 3439

Vero House ~ Level Two  
10 Devon Street ~ New Plymouth







## Panorama on the Kaitakes



*Geoff, Linda and Benjamin Murray*

Geoff and Linda Murray are 18 months into their farm park development and are still pondering how they got there in the first place. A search for a few acres to build a house on and enjoy a rural lifestyle has taken wings and metamorphosed into an opportunity to share that dream with others. It is a dream worth sharing too. The magnificent panoramic views from the Kaitake Road property are just stunning. The vista over the valley and ridges of the Koru area and down to the coast take your breath away. There is never a day when you have nothing to look at.

So why a farm park and what are farm parks? A few years ago land was divided up into lifestyle blocks, where each land owner had one or ten acres each, built their house on it and had a few animals. Many of these lifestyle blocks have found the hassle of a few animals a nuisance and people building sheds and sheds that are often very unappealing. The concept of farm parks is that you own a small acreage, (say one acre), and have an interest and share of, through a trust, the common land. The

type of house you build is usually restricted and the building sites are architecturally selected. There are also often shared facilities, such as tennis courts and pools, walking tracks and key pad entries onto the property. A farm manager is appointed to care for the communal land and animals.

The Murrays chose a farm park for their 50 acres because they wanted to maximise the potential of the land, and provide privacy and tranquillity for the five land owners. The uniqueness of the site means that other similar developments, (like The Tapuae Farm Park), offer different things. The special aspects of the Kaitake Farm Park are such things as; peace and quiet, a retreat from the bustle of city life (yet you are only 10 minutes from the city), a pa site that is covenanted and stands relatively intact, the native bush that is being restored and fenced off to regenerate, the backdrop of the Kaitake Ranges (which affords protection from some of the fiercest weather, giving the site something of a micro climate not possible nearer the coast) and the views are unparalleled with each building site having its own special outlook.

Geoff and Linda and their four children have made the farm park a family project, with everyone contributing to the development. It's not hard to see why the Murrays have a passion for the place, and speak of it as the new baby in the family - the latest arrival to be petted and fussed over. Diggers and dozers have been busy making roads and levelling sites, spraying of gorse is ongoing, pine trees have been felled and cleared, lakes developed, trees and other plants planted and fences erected. Each event unfolds as the family discusses and re-discusses the preferred options - Should the fence go here? Should the path go there? Should sheep go here? Should we mow this edge? What trees should we plant there?

For prospective buyers of the remaining sites not yet sold, it would be worth noting that Geoff and Linda aren't property developers out to make a quick profit. In fact, they are people who love the land and are trying to develop a special place that will be enjoyed by residents of Oakura for generations to come.

*By Kim Ferens*

*The ultimate in warmth and luxury*  
**Possum + Merino Products**  
**Hats , Gloves , Socks and awesome Jerseys**  
**ALL AT THE BEST PRICE IN TOWN**



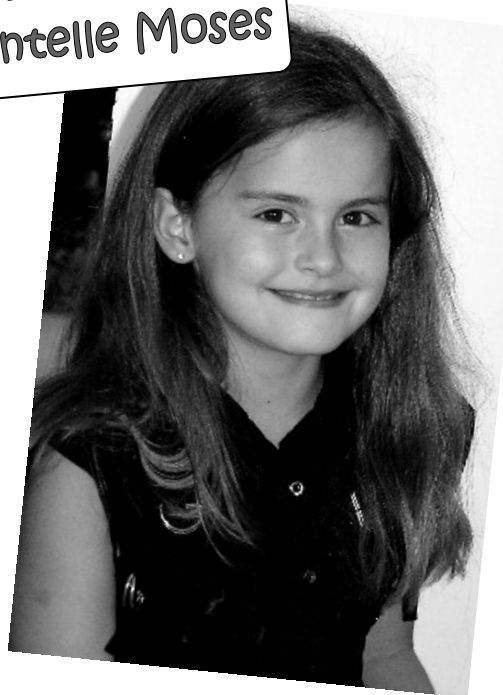
Kiwi Outdoors Centre  
18 Ariki Street New Plymouth  
**kiwioutdoorcentre@xtra.co.nz**





## TOMkid PROFILE

### Shantelle Moses



Name: **Shantelle Moses**

Age: **8 and a half**

School: **Omata**

My favourite food: **Roast Pork, crackling and vegetables.** Favourite fruit: **feijoas**

My favourite activity: **reading**

My favourite game/sport: **Cheerleaders**

Best movie: **Bring it on**

Best friends: **Dannielle Fougere, Hannah Barron, Bailey Hooson, Laura Anderson**

When I grow up I am going to be: **a make up artist**

# JOKE

Where does a whale go to get weighed?

A whale weigh station.

# WANTED

Contributors wanted!!

Would you like to send in something for our kid's page?

Have you got ideas bursting out with nowhere for them to go?

Would you like to see your work and name in TOM?

Did you know that it would then be on the World Wide Web?

If you are this person then we want you. Call or email us today to find out how this can be possible. Phone Tracey 752 7875 or email [oakuramesseger@extra.co.nz](mailto:oakuramesseger@extra.co.nz)

**SWIM SCHOOL**



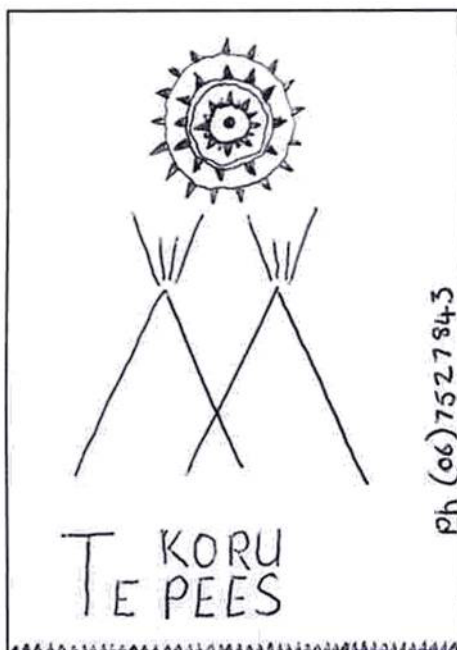
**LEARN TO SWIM**

**Fun, safety and play the Swim School way**

**With fully qualified and experienced instructors**



**Call Marion Vermeulen  
On 06 758 0212**



ph (06) 752 7843

**TE KORU  
TE PEES**

**Kate Evans**

— SPORTS MASSAGE THERAPIST —

**Nagging aches and Pains?  
Injuries that won't heal?  
or just tense and tired.**

**Call Kate on 06 752 7251**

**2a Kaitake Place • Oakura**

# Kip McGrath

Ex Deputy Principal of Okato College Judy Clark has purchased the Kip McGrath **Education Centre** in New Plymouth, situated at 34 Dawson Street. Judy is very excited at this opportunity to continue to assist students with their education.

The **Kip McGrath Education Centre** in New Plymouth offers tuition in mathematics, reading, spelling and English. Students at Year 11 and above who are wishing to have extra tuition in relation to the National Certificate of Educational Achievement (NCEA), with special emphasis in literacy and numeracy, are also catered for at **Kip McGrath**. After the initial free assessment, where a student's strengths and weaknesses are identified, an individual programme is established.

Students in Years 1 – 10 are taught with a maximum of four students to one tutor. A variety of teaching methods are used, including worksheets, audio tapes, computer-aided programmes and the more traditional book learning styles. Student's individual programmes ensure that the student is not too intimidated to ask questions in front of a larger group. Peer pressure is, therefore, eliminated. Homework is given after each session to reinforce what was taught during the session.

The **Kip McGrath Education Centre** caters for children of all ages with the Kip McGrath programmes designed for students aged 7-15 years old. Children who are underachieving, have a specific learning difficulty in one or more areas or who have missed school because of illness would benefit from tuition at the **Kip McGrath Education Centre**. Parents of children who are concerned that their child are getting lost in large classes and are slipping in achievement would also benefit with time enrolled at **Kip McGrath** in New Plymouth. Many students are enrolled to ensure that they continue to achieve well and are given extension work to achieve this.

Student progress is carefully monitored. Staff at the **Kip McGrath Education Centre** in New Plymouth are only too happy to discuss your child's progress. As time is limited between sessions it is advisable for you to ring to make an appointment time.

It is my personal aim to make contact with each family during each term. If your child requires assistance with a specific need please let us know!

We do not attempt "quick fix" solutions. An investment of 10 lessons should be seen as an absolute minimum, if your child is to improve. We have excellent resources and excellent tutors who create a positive learning environment. However, it takes time and commitment from all of us to ensure that your child's time at the **Kip McGrath Education Centre** is a positive and rewarding experience.

Contact Judy at **Kip McGrath Education Centre** – 7578916 for further information or email Judy at [kipmcgrathnp@clear.net.nz](mailto:kipmcgrathnp@clear.net.nz)

# Oakura Plunket

Oakura Plunket playgroups (coffee mornings!) are up and running, so blockout Friday mornings 9-10:30. Join us for coffee and a chat, while the littlies check out some new toys and faces, with plenty of space around.

All Mums and Dads are welcome.

**Where:** St James Church hall, corner of Donnelly St and Surf Highway 45

We will also be running a number of health and safety sessions. On Friday 21 May the New Plymouth Plunket car seat educator will be coming and she can check out your car seat and answer any questions. She will also be talking about fall prevention. Did you know that falls are the most common cause for hospitalisation in under four year olds? Also coming up are sessions on CPR and choking and immunisation questions.

Looking forward to seeing some big and small new faces.

For further information please contact Leanne 7527278 or Claire 7527229,

Affordable, quality  
home-based child care  
available to you in Oakura

Greer Florence  
06 752 1220

Lianne Bentham - PORSE - 06 759 6668



**Kip McGrath**  
EDUCATION CENTRE N.P.  
*Where education means success*

- **READING**
- **SPELLING**
- **ENGLISH**

For a **free**  
assessment call  
Judy or Lance now  
06 757 8916  
or 0800 TUTORING

**ENROL NOW**

email: [kipmcgrathnp@clear.net.nz](mailto:kipmcgrathnp@clear.net.nz)  
34 Dawson St New Plymouth (Bowlarama Building)

## Kaitake Kindergarten



*Brendan Adlam, Jack & Ben Aim, Isabel Henderson & Camden Lacey, all admiring the new petrol station & fire station.*

Everyone had a wonderful holiday with lots of sunshine and warm weather. The Kindergarten is full of children's cheerful voices as they greet friends after the holidays. A few of the children are a little bit shy after being out of the routine of the Kindergarten for a few weeks but they are quickly interested in the new props that we have awaiting their return after the holidays.

As the photo above shows, a new garage and fire station came over the holidays. The children are very quick to start up imaginary games reinacting what they believe happens at a fire station or petrol station. These games allow the children to learn participation and co-operation, as they often have to take turns playing with the props.

Updating the props at Kindergarten is a continuous process, with old props being replaced and upgraded so that toys are always fresh and in good working order.

Before the holidays we sold our annual Easter raffle, sponsored by Cadbury, which is always very popular. The proceeds of this year's raffle are being used to purchase indoor gym equipment, which will be a very welcome addition to the Kindergarten in time for winter.

Our newly planted vegetable garden has thrived in the good weather over the holidays and Ruby the rabbit will be looking forward to the daily ritual of adding a few vegetable leaves to her rabbit food. The children enjoy the routine of feeding the rabbit, all part of a day in the life of a Kindergarten.

**Susan Henderson**  
*Committee*

## Oakura Playcentre

Well we're into Term 2 already here at Playcentre and we're ready for lots more good times with our children.

To celebrate Easter, the children enjoyed making decorated eggs. We used white eggs which we hard-boiled, then the children drew on them with a white wax crayon, then dipped the eggs in various dyes. They looked great and the kids enjoyed eating them afterwards. We also had an Easter Egg hunt which involved lots of digging in the sandpit – always a favourite pastime.

In the last issue I wrote about the great trip we had to Stoney Oaks wildlife park, and here is a photo from that.



*Hayden, Kata and Quinn on Maglicuddie*

We currently have lots of families on our rolls, with most attending regularly. Children need to come regularly to develop their sense of belonging and feel that the Playcentre is truly theirs. We also need regular attendance from our families in order to get government funding which is the main source of our income as we currently do virtually no fundraising.

Playcentre is open to all children aged 0-6 years, and we're open every Monday, Wednesday and Friday during term time from 9.00am-11.30am. Our fees are a very reasonable \$15 per child or \$20 per family per term - no matter how many sessions you come to - and the first three visits are free for new families wanting to see how we operate.

If you want any more information or have any questions, please call Mandy Robinson on 752 1292 or Sharon Steen on 752 7376.

Otherwise, please feel free to come and join us - we're a friendly, fun place and warmly welcome all new families.

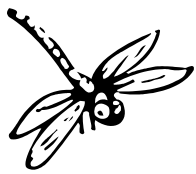
*Trish Whitney*



# Omata School News

Our study of 'Minibeasts' proved very popular last term with many amazing artworks and creatures lurking in every classroom. Room 3 had their very own nest of spiders hatch out and the classroom was teeming with webs and small spiders busily making their way in the world. Other lucky minibeasts had small vacations in classroom terrariums and were observed very closely by curious eyes. (They were happily released into our native bush afterwards)

Some great written work was produced and here are some examples from our year 3 and 4 students.



## Dragonflies Interesting Facts

The Dragonfly is one of the bug worlds deadliest hunters. It is very agile and can even manage to fly upside down and fly backwards. The young are called nymphs. They are very fierce. Their favourite prey is tadpoles because they are defenseless.

### Its Life

The female dragonfly lays eggs in the water. Many eggs are eaten by frogs and small fish. When the eggs hatch the young start searching for food. Nymphs molt many times and after its last molt it crawls out and flies away.

Dragonflies have short lives of up to two weeks. In that time they fly about catching insects. A single dragonfly can catch up to one hundred insects in a day. It catches insects in a way no other insect can. Its legs act like a basket which the dragonfly uses to catch small insects that fly, such as bees and crickets. Its four wings give it extra speed so it can chase prey and catch it quickly. Finally after two weeks the dragonfly dies.

### Habitat

Dragonflies live in damp grass areas around swamps where they lay their eggs. Lots of dragonflies are green like the green darner dragonfly. The largest dragonfly is the petalura but even with its seven inch wing span it would be no match for the giant dragonfly that lived 300 million years ago. It had a wingspan of nearly one metre.

### Food

Dragonflies eat on the wing. The unfortunate creature captured in their legs is eaten alive. They prey on many things including bees and wasps. They often prey on grasshoppers and bees which are easy to catch.

by Jamie Barrett



## Being a Spider for the Day

One Saturday morning when my spiral web was covered with dew, I was sleeping when suddenly my web shook a little and woke me up. I slowly

# CHILDRENSWEAR

First Service and value since 1992

## CCWARD WINTER 2004

- OSH KOSH
- BRIDGET B
- MINI MINORS
- SML FRY
- BRIGHT BOTS
- D-LISH
- ½ PIPE
- VIPER
- ELLIE B
- BODEAN
- BOBUX
- KABOOSH
- PETER RABBIT
- M8
- BONDS



Ph 06 7575522

6 Devon St East, NP

crawled to see what was happening and suddenly something caught the corner of my eight delightful eyes. There was a fly caught in my web. Just as I was about to start crawling another fly got caught. What a feast I thought. But after I had eaten the first fly I was full, so I wrapped the other one in my shiny silk.

When it was dinner time I ate the second one. At the same time something destroyed my web. I just managed to scuttle out of the way. Time to move webs! At my new web I was happy and I lived happily ever after.

by Laura Anderson

## Being Captured

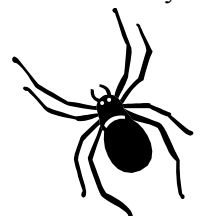
I am going to spin a funnel web so I can get flies to eat and give to my spiderlings. I am hunting for my prey but I get captured in a jar. I try to climb out. The holes get bigger and bigger so I climb out and go into the trees where I like it.


by Hannah Barron

## Spider for the Day


The sun comes up and I crawl out of my sleeping place, my tangled web, and start climbing up the wall. I spin a web and catch lots of insects in my new sticky web. I am going to have one insect now and another one later. I dig my fangs into the insect and spread digestive juices all over it. Next I swallow it down. It is time to lay my eggs in my web and after that I have to shed my skin.

by Phoebe Tomlinson





## Diggers and Dump Trucks



### For all your earthmoving requirements

MOB: 0274 952 892  
OFFICE: (06) 752 7270  
FAX: (06) 7527072  
EMAIL: [graham@symonstransport@xdra.co.nz](mailto:graham@symonstransport@xdra.co.nz)

# Oakura School News

## Elections

Like all New Zealand schools in April, Oakura School held an election for new Board of Trustees members, the tenure for which is three years. There were eight parents who accepted nomination for five positions. Approximately 50% of the school community voted, with the successful candidates being: **Steve Novak, John Ardern, Louise Stevens, Jane Hoskin and Lyndie Foster-Page.** The new staff representative is **Phillipa Butt.** Congratulations to the successful candidates and thank you to all parents who made themselves available.

The Friends of Oakura School committee recently held its Annual General Meeting. The incumbent Chairperson, Sue Thomson, who had held this position for five years, was not seeking re-election; therefore, nominations for this position were called for. **Victoria Braddock-Pajo** is the new Chairperson and we wish her well in this new role. Linda Collins is Treasurer and Cathy Ardern is Secretary. There are also approximately six new committee members, which is wonderful to see.

The committee would like to thank all other members who have also stood down this year, for their input and support. A special big thanks to Vicky Jury who has been a member of the FOOS committee for the past 11 years.


Another election at Oakura School involved the pupils. The senior classes were asked to select two or three children from each class to act as representatives on the School Council. The Councilors are:

Room 5	<b>Milla Novak &amp; Max Hardie-Boys</b>
Room 7	<b>Emma Glucina, Zac Power &amp; Adam Landers</b>
Room 8	<b>Catherine West &amp; Teihorangi Walden</b>
Room 9	<b>Olivia Thame &amp; Jake Andrews</b>
Room 10	<b>Georgie Wood, Thais Farrant &amp; Hayden Taunoa</b>

The senior classes have meetings where all pupils can put forward suggestions they have about improving the school or ideas for new facilities. The Councilors then take these ideas to meetings held twice a term with our principal, Lynne Hepworth.

This a very worthwhile process to ensure continuing liaison between teachers and pupils. The Councilors are all doing a very good job and are sure to be developing new skills as they carry out their role.

*Cathy Ardern*



## Giving something back to the community

For all your earthworks in Oakura  
Symons Transport will donate  
5% of the job total to Oakura School

### For all your earthmoving requirements

Present this coupon to help support Oakura School

## Oakura's dance queen blows the whistle on referee



Raeleen, Cullen and Dee Luckin (Keeley was busy elsewhere!)

Dee Luckin is gearing up for a busy season on the rugby field as a referee. Following on from previous years as a senior referee, Dee is hoping to achieve higher things this year as part of the Regional Squad of Referees. The Regional Squad for the Lower North Island comprises of 15 of the top referees, taken from a beginning pool of approximately 5000, who get to officiate at NPC games and Super 12 games. Quite a step up from refereeing club rugby and being a touch judge. The selection process to be part of the Regional Squad, (Dee just missed out last year), is extremely demanding. Each game Dee referees is assessed and three selectors attend games to evaluate each performance. Dee has his own coach – Alan Day of Oakura, who travels around the country with him, organising the mundane details of his matches and providing support and advice when needed. This help is invaluable to Dee and the rapport he has with Alan is part of his success. Obviously you need to be very fit to be a referee and Dee spends time attending the local gym. Two other weekly sessions of preparation are needed before each match – one of mental visualisation and one of gathering information on each team being refereed. For this busy father of two and local school teacher, being a referee is part of his life dream which started when he was a boy and wanted to be an All Black. Not being able to

realise this dream left Dee still wanting to represent his country at the top level in some form (within rugby) so he chose refereeing. I've no doubt we'll see him popping up on our screens in the International arena in time to come. It goes without saying that Dee is passionate about his refereeing – I think fanatical was his word. The perks and benefits far out weigh the hours away from home and the constant juggling act needed to fit in his teaching and family. Perks like meeting top rugby players, coaches and referees. People like Christian Cullen, Brian Williams and others. Perks like all the new friends he has made and travelling around the country.

Dee's wife Raeleen has her own busy life. Most people in Oakura and Omata know of Raeleen through her dance school - Dance Highway 45. Many Oakura children have now been taught many different forms of dance (to varying levels) through the school. I was there when Raeleen's passion for dancing saw her begin giving dance lessons five years ago at Omata School. Today the Dance Highway 45 has grown into a reputable business with its own premises, logo and first class dancers - most of that growth has been through a winning combination of word of mouth and Raeleen's abundant energy. This year follows a busy previous year with the birth of the Luckin's second child Cullen. Sister Keeley is nearly three. There have been Jazz Competitions, examinations are coming up and also a Dance Highway 45 production. The school has seen success through Tess Novak, Grace Power and Duchene Alder, who were nominated to perform in Christchurch at the National Competition, – Grace even managed to go as far as the finals. In addition, Raeleen has teamed up with local music teacher Jan Aiello to do the choreography and dancing in the productions of Spotswood College, Spotswood Primary and Omata Primary Schools. Another recent achievement was choreographing the Oceania Roller Sports Competitions' opening ceremony. In Raeleen's opinion the whole dancing scene has changed hugely over the last few years. Many new and different forms of dance have been introduced onto the scene such as hip hop, street funk, jazz, video etc. and this has made dancing more appealing to children including boys. She sees a move away from traditional exam work to competitions and performances and she thinks television shows like NZ Idol highlight the sort of work dancers can get into.

Their energy, passion and drive will keep the Luckin's achieving positive things in and for Oakura for years to come.

By Kim Ferens

# 04(-c°) WINTER me & p PERFECTION

04(-c°) tsubi [mens]

04(-c°) tsubi [womens]

04(-c°) tsubi [womens]

**m&p**  
meyer&prichard

★

38 Devon St West  
New Plymouth  
T 06 769 5459  
F 06 769 5460



## Stratford Mountain Club


### First tracks at Stratford Mountain Club

Stratford Mountain Club is claiming the first tracks of the season after they fired up their T-Bar on Wednesday.

"....10 cms of new snow fell Wednesday April 7th. down to 1000m. This halted work on the new lodge rebuild...the roof was half on but it did not stop the builders downing tools and putting a few tees on the T-bar...they were joined by a few lucky club members who rode the afternoon out in better than average conditions....Gibbers arrived at nightfall as the snow clouds cleared and left a perfect moonlight session winding up at 2.00AM. More cold weather forecast for Sunday could see the T-bar open for commercial operation....the first time this early in the year."






*Thornton Davies helping with construction.*



**VOSPERS**  
Funeral Home

**Shirley Adams**  
Bereavement  
Support





**"People caring for people"**

257 Devon Street East, New Plymouth  
(06) 759-0912

## Kaitake RFC

The club now has a website. It is at  
<http://www.nzrugby.net.co.nz/taranaki/Kaitake RFC>

03/04/04

Kaitake Senior Reserves won their season opening hit-out 52-5 in a polished display at home against Clifton. It was a vastly improved game from their warm up game the previous week against Spotswood United, with the forward pack giving good go-forward ball for the much improved backline. Standouts for the day were lock Justin Ruakere and Rob Pompey both scoring two tries while Danny Chamberlain had a strong game on the wing.

10/04/04

Kaitake Senior Reserves in a tightly fought match were beaten 17-13 by Kaponga proving that they are hard to beat at home. Kaitake started with a flyer, rattling Kaponga with some stunning attack and telling defence, to lead 13-12 at the break. This was achieved totally by winger Matt Sturmer with 2 tries and a penalty. In the second half, however, Kaponga showed their experience with a good display into the wind. They completely shut down Kaitake.

17/04/04

Kaitake Senior Reserves won 49-10 at home against Southern securing them 3rd position on the ladder behind Okaiawa and Kaponga.

### Well done Paul!

Paul Cunningham, Oakura, has been made an honorary ambassador of New Plymouth District as he was selected for the New Zealand Secondary Schools Soccer Team to travel to the United Kingdom and Europe this month. The team will be playing against the best players from Scotland, Northern Ireland, the Republic of Ireland and the English Schoolboys, who will be celebrating their centennial in 2004. The team will also be playing the Under 19 teams from Belgium, Austria, the Czech Republic and Slovakia. We look forward to catching up with Paul on his return.



**Hareb Deken**  
Motors



331 St Aubyn Street New Plymouth Ph/Fax 06 759 9957  
Email [harebdeken@clear.net.nz](mailto:harebdeken@clear.net.nz) [www.harebdekenmotors.co.nz](http://www.harebdekenmotors.co.nz)

**Taranaki's**  
**4 WHEEL DRIVE CENTRE**

A/hours Mike Hareb: 06 752 7697  
Ton Deken: 06 752 7405 John Kurta: 06 758 1872



# Oakura Pony Club

In the last newsletter I noted the successes of our club members at various pony club competitions, including those members, ( Abby Wright (TeamCaptain), Tara Harvey, Lauren Rook, Mathew Thomas), selected to represent Taranaki at the National Pony Club Championships. This event was held at Cromwell over the Easter period and attracted the cream of Pony Club riders from 13 pony club districts across the country, in total some 80 riders. The 7 day trip to Cromwell was a major exercise in logistics and planning, with the transport and management of 6 horses on their 3 day road odyssey across the strait to the deep south (and return), and the transport and management of the team and attendant grooms (reserve riders), parent supporters and helpers, numbering 20 people. All ponies arrived in Cromwell in good condition the team was in good spirits and were confident in being well placed in the event. It was such a beautiful part of the country to be in – the autumn colours and mountains a stunning backdrop to the events arena.

Day 1 – Dressage competition. A full team score event. The whole team posted very good scores throughout the morning and 20 sets of eyes kept a watchful lookout over the scoreboard as other teams scores were posted. Excitement levels were raised as the Taranaki team continued to head the field throughout the day to win the National Pony Club Dressage Trophy – a very prestigious trophy indeed - and also led the field in points with the top four riders scores going into the following days competition. What a wonderful day. Needless to say the spirit around our camp that evening was bubbling.

Day 2 – Crosscountry and showjumping. The crosscountry phase was a mixed bag of results with good clear rides but also some rider errors and some mounts baulking at a few of the very testing and technical fences. Our team position slipped down the leader board, but not out of contention, as we turned our attention to the showjumping arena. Teams rode in reverse order, Taranaki being the last team to ride in the competition. Again, all eyes watched keenly, with minds working mental calculations keeping track of the

points table, as the other teams in contention for the major honours accumulated faults and points against them. Taranaki was suddenly in with a good chance. With no room for error, each of the Taranaki riders took to the arena. Heart rates spiralled and nerves were racked as each rider one by one clocked a clear round. One more rider to go - Abby Wright on Punch. Emotions were at boiling point, ready to spill over. A deathly hush fell over the large spectator gallery as Punch and Abby skipped their way around the arena. One jump to clear and through the flags. The crowd erupted, emotions finally spilling over, especially in the amber and black section. A fantastic four clear rounds which placed them back at the head of the score board. National Champions - a fantastic result. Well done team, well done Abby, Tara, Lauren and Mathew.

**A night on the town.** Oakura Pony Club holding a fundraising evening on Friday the 21<sup>st</sup> of May at Butlers Reef Hotel with local musicians “The Decktators” calling the tune. A fun night out. Tickets are \$10.00 and are available at the door or from Liz Muggeridge 7527969, Graham Rook 7527454 or Robyn Harvey 7527479.

*Graham Rook  
Oakura Pony Club.*

## Kaitake netball

We have moved up a grade to 2<sup>nd</sup> grade this year and are off to a good start with 2 wins from 2 games.

We started competition on 3 April and played against Ardena, a club from Inglewood. It was a good start for us, as a fairly new team, and it was even better for us to come away with a 26-11 win.

It was then a 2 week break before getting back into it on 24 April where we had a hard fought game against Waitara High B. Our holiday practicing obviously paid off as we came away with a 26-18 win.

Our last game of grading is on 15 May vs Tukapa, (our old rivals from 2002), 2.25pm and a new draw for competition will be drawn up following that weekend.

We hope to get that draw in the next TOM WHAT'S ON so if you want to come down and support us at Waiwhakaiho you can check out the time and court there.

Thanks to our sponsor, Butlers Bar & Café and good luck to our fellow Kaitake Rugby team, who are also doing very well this year.

*Tanya Farrant  
Secretary/Player*



**Weatherbeeta  
Winter Rugs  
Priced from \$149.95**



2 Breakwater Rd, Moturoa, New Plymouth  
Phone (06) 751 3303 Fax (06) 751 3306

# Letters to the Editor

ED,

Through your paper could you please have somebody explain why the local Fire Brigade saw fit to close the main road for what appeared to be a very minor motor accident on Tuesday of last week 13<sup>th</sup> April.

Cars were held up for almost an hour all the way back to Spotswood and I feel the action of the local Brigade was both inconsiderate and inconvenient for those trying to get home after a days work.

I look forward to any response from the firemen on this matter so that perhaps it can be avoided in the future.

**C T Clark**  
**Oakura**

## **Motor Vehicle Accident Tuesday 13<sup>th</sup> April.**

The Editor

On the above date I, along with 5 of my colleagues, attended this accident on SH-45, adjacent to Sole's property, on top of the hill north of the village. On arrival it was obvious that a car had taken out a power pole, which was hanging precariously across the road, and we responded in the way we have been trained.

It was, therefore, a little distressing to be accosted some days later by people from the village, saying things like "you don't know what you are doing" and "couldn't you have opened up one way" and "I had a meeting to go to and you guys made me late, you are incompetent".

The NZ Fire Service has procedures that must be followed to the letter. For safety we stop all traffic to ensure that there are no live wires causing a hazard. This stoppage stays in place until the area is confirmed safe by, in this case, Powerco or the Police. At this incident the **Police** actually took control of traffic flow and we were acting on their instructions.

To those who were critical I would just like to say that we appreciate that being held up for an hour can be a little distressing, but please remember that we were there for almost three hours and I am sure most of you would have got your dinner before we did.

These people may care to ask themselves why **VOLUNTEERS** are so hard to find.

In closing I would like to say that I would sooner be criticised for doing something wrong and avoiding a mishap, than be criticised for doing nothing at all and causing a disaster.

This is a personal letter and does not necessarily reflect the opinions of the NZ Fire Service.

Yours,  
**Terry Griffiths**  
**Volunteer Fire Police**

Dear Editor

I have lived in Oakura for ten years, and truly believe that there isn't anywhere else in the world as good as living here. Recently I have taken to walking down Wairau Road nearly every day for health reasons, and I really enjoy it except for one thing - **DOG EXCREMENT!!** The amount of offensive material is truly disgusting, and I am sure I'm not the only one who has a gripe about it. Can't anything be done? I think dog owners should be aware of the responsibilities that come with owning a dog, and make Oakura a cleaner place to live.

Yours sincerely

**Kate Lewis**

**NPDC senior animal control officer Jim Aitken replies:**

Animal control officers patrol areas throughout the district seven days a week, and will issue a \$500 fine to any dog owner who is seen to not be picking up their pet's faeces from a public place. However if a member of the public sees an offending dog and owner, they can ring the council on 759 6060 with the location, time and date of the offence, an accurate description of the dog, and an identification of the dog owner, if possible. This will enable the animal control team to follow up the incident and, if found, educate the dog owner on their responsibilities.

**Busy year for local inline skater - Clare Aiello continued from front page**

Doug has spawned a whole community of keen inline hockey players through his children and their school. There is a considerable process to go through to get to national level starting at the club level – The Ravens. From there you may get selected to play for your district – The Central Region as a provincial representative. Then you can get selected to play for a National Team – 14U, 16U, 20U, Seniors and for the elite players – a World Team. Involvement in roller hockey for Claire means coaching the Devon Intermediate A Team, practises for the Oceania Tournament meant three times a week at the rink. Claire rates her playing abilities as a puck chaser and attacker – a bit of a "fox terrier", an intensely physical and fast game requiring quick reflexes and fitness. Claire says "I love the speed of the game and working out strategies to win. You get a real adrenalin rush. I have met some really neat people (especially males!!) and had heaps of fun." If the size of Claire's bruises are anything to go by then you would have to love the sport passionately!! Good luck in pursuing your dreams Claire.

**By Kim Ferens**



## Classifieds

### SUBTROPIX

1140 Main Road, Oakura 50% off all palms, pots and garden ornaments. Limited time only. Open 12 to 5 daily or phone 752 7954 for appointment.

### FOUND

White bunny with grey ears and tail and pink eyes. Found on Surrey Hill Rd. Phone Janet 752 7654.

### HOLIDAY ACCOMODATION WANTED

2-3 bedroom bach for 2 adults and 4 children. Close to beach. 29 Dec for 2 weeks. Careful tenants. Low cost please. Respond as soon as possible. Ph 07 827 6676 email [webb@maxnet.co.nz](mailto:webb@maxnet.co.nz)

### Tom tidbits

- The access to the beach half way up Jans Tce Hill has been fenced off due to erosion on the track.
- Masters surfing 1<sup>st</sup> placegetters

Lyndie Foster Page  
womens 35-45 years

Greg Page  
mens 35 -40 years

Well done guys!

# WE WANT YOU

## TO TELL US ABOUT OUR LOCAL CHAMPIONS!

Do you know someone who has made a significant contribution to the well being of the New Plymouth District community, through an exceptional act, or over a long period of time?

Nominate them for a Citizens' Award. Nomination forms and eligibility information is available from council offices. For more information phone 759 6060.

Nominations close 31st May 2004



**NEW PLYMOUTH DISTRICT COUNCIL**  
newplymouthnz.com

## Try our NEW Breakfast menu


Tuesday - Monday from 10am

**The ONLY cafe on the coast  
OPEN on Monday**

OPEN 5 days closed Tue/Wed  
By arrangement for evenings  
Call (06) 752 1399

**green ginger** cafe  
ph 752 1399

*Best coffee on the coast*



## Subscribe to TOM

Subscriptions are now available to TOM. For only \$15 per year we will post you a TOM every month where ever you live in New Zealand. A great way to keep up with the local news.

Name:

Address:

Please make cheques payable to  
The Oakura Messenger.

**pilates@egosynchro**

- Instruction **videos** are **now available**
- Mats & Balls • **1:1** Tuition + classes
- Polestar (USA) Qualified Instructors
- Fully equipped studio

**physiotherapy@egosynchro**  
**SPINE & SPORT**

- **Highly skilled** team of **physios** for all your injuries and pain management
- All acute injuries will be seen within **24 hours**



8 Bonithon Ave ▪ New Plymouth ▪ Ph (06) 769 9992  
[www.egosynchro.com](http://www.egosynchro.com)



# Anne Wilson

06 752 7775

021 HOUSE 0

0 2 1 4 6 8 7 3 0

## Properties Urgently Wanted

- Buyer A** 10 - 15 acres urgently required by cash buyer, with or without house, within 40 minutes drive of New Plymouth.
- Buyer B** Okato or surrounding rural area: My buyers would love: a private, quiet, sunny home that would suit large furniture. Trees garden and mountain views would be a bonus.
- Buyer C** A Family from South Taranaki are looking for a home in the Oakura area up to \$250,000.
- Buyer D** Buyers from Auckland searching for a low maintenance home anywhere in the Oakura area. Cash Buyers up to \$300,000

I have a long list of buyers looking for 3 bedroom houses in New Plymouth and Okato and Omata areas in the \$130,000 to \$170,000 bracket. Existing tenants for some would be appropriate.

## Properties For Sale by Anne



**28 Karamea Street,  
Whalers Gate, Offers**  
Brand new, four bedroom home



**Investors First Home Buyers  
Offers over \$150,000**  
Sunny, three bedroom, private,  
fenced home.

### Big Home In A Friendly Environment, Offers



Rarely does an opportunity arise to purchase a quality, built, low-maintenance home in a sought after location in the up-and-coming Okato township. Versatility reigns in this huge 300m<sup>2</sup> residence. The features of this home are endless so call me right now.

### Brand New Townhouse

2 Bedroom, brick, sunny, outdoor living with a short flat walk to great shopping centre. Whiteley Lease and Cross Lease. Price Range \$190,000 to \$210,000. Call me for more details.

## Inside the Jargon - A Couple of Real Estate Terms from our Glossary

**Unconditional Contract** This is a contract with no conditions. This is binding on both parties and must be proceeded with.

**Conditional Contract** Where the contract has conditions inserted, usually for the benefit of the purchaser. eg finance, LIM report, builders report, the contract is confirmed once the purchaser has satisfied those conditions by the stated date.

## Thought for the Month

Success comes before work  
only in the dictionary

**HARVEYS**

PEOPLE and PROPERTY

**Park City Realty Ltd - MREINZ**